

ABflo® 488 Rabbit anti-Mouse CD40 mAb

Catalog No.: A27175

Basic Information

Observed MW

Calculated MW

32kDa

Category

Primary antibody

Applications

FC

Cross-Reactivity

Mouse

CloneNo number

ARC71300

Conjugate

ABflo® 488. Ex:491nm. Em:516nm.

Recommended Dilutions

FC 5 µl per 10⁶ cells in
100 µl volume

Background

Predicted to enable antigen binding activity; protein domain specific binding activity; and ubiquitin protein ligase binding activity. Involved in B cell mediated immunity; CD40 signaling pathway; and cellular calcium ion homeostasis. Acts upstream of or within several processes, including defense response to other organism; positive regulation of B cell activation; and positive regulation of interleukin-12 production. Located in external side of plasma membrane and intracellular membrane-bounded organelle. Part of CD40 receptor complex. Is expressed in several structures, including alimentary system; brain; hemolymphoid system gland; liver and biliary system; and reproductive system. Human ortholog(s) of this gene implicated in several diseases, including Kawasaki disease; autoimmune disease (multiple); end stage renal disease; hyperimmunoglobulin syndrome (multiple); and non-Hodgkin lymphoma (multiple). Orthologous to human CD40 (CD40 molecule).

Immunogen Information

Gene ID

21939

Swiss Prot

P27512

Immunogen

Recombinant protein (or fragment). This information is considered to be commercially sensitive.

Synonyms

IGM; p50; Bp50; GP39; IMD3; TRAP; HIGM1; T-BAM; Tnfrsf5

Contact

☎ | 400-999-6126

✉ | cn.market@abclonal.com.cn

🌐 | www.abclonal.com.cn

Product Information

Source

Rabbit

Isotype

IgG

Purification

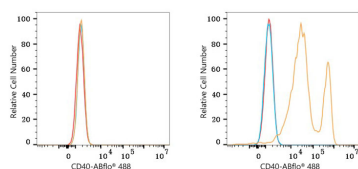
Affinity purification

Storage

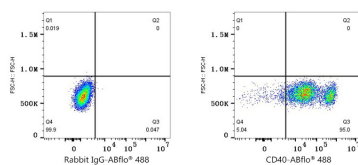
Store at 2-8°C. Avoid freeze.

Buffer: PBS with 0.09% Sodium azide, 0.2% BSA, pH7.3.

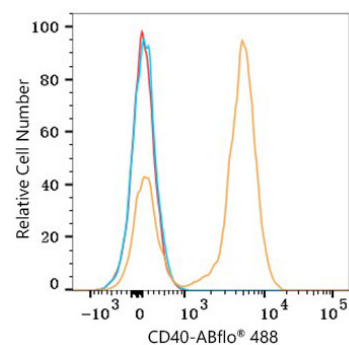
Validation Data



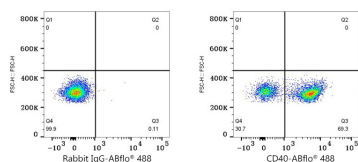
Flow cytometry: 1×10^6 293T cells (negative control, left) and 293T (Transfection, right) cells were surface-stained with ABflo® 488 Rabbit anti-Mouse CD40 mAb (A27175, 5 μ l/Test, orange line) or ABflo® 488 Rabbit IgG isotype control (A22069, 5 μ l/Test, blue line). Non-fluorescently stained cells were used as blank control (red line).



Flow cytometry: 1×10^6 293T (Transfection) cells were surface-stained with ABflo® 488 Rabbit IgG isotype control (A22069, 5 μ l/Test, left) or ABflo® 488 Rabbit anti-Mouse CD40 mAb (A27175, 5 μ l/Test, right).



Flow cytometry: 1×10^6 C57BL/6 mouse splenocytes were surface-stained with ABflo® 488 Rabbit anti-Mouse CD40 mAb (A27175, 5 μ l/Test, orange line) or ABflo® 488 Rabbit IgG isotype control (A22069, 5 μ l/Test, blue line). Non-fluorescently stained cells were used as blank control (red line). Cells in the gate were used for analysis.



Flow cytometry: 1×10^6 C57BL/6 mouse splenocytes were surface-stained with ABflo® 488 Rabbit IgG isotype control (A22069, 5 μ l/Test, left) or ABflo® 488 Rabbit anti-Mouse CD40 mAb (A27175, 5 μ l/Test, right).