

# SLFN11 Rabbit mAb

Catalog No.: A27142 **Recombinant**

## Basic Information

### Observed MW

100 kDa

### Calculated MW

103 kDa

### Category

Primary antibody

### Applications

WB,IF/ICC,IP,ELISA

### Cross-Reactivity

Human

### CloneNo number

ARC51658

## Background

Enables tRNA binding activity. Involved in several processes, including defense response to virus; negative regulation of G1/S transition of mitotic cell cycle; and replication fork arrest. Located in cytosol; nucleoplasm; and site of DNA damage.

## Recommended Dilutions

**WB** 1:1000 - 1:5000

**IF/ICC** 1:100 - 1:400

**IP** 0.5µg-4µg antibody for  
200µg-400µg extracts of  
whole cells

**ELISA** Recommended starting  
concentration is 1 µg/mL.  
Please optimize the  
concentration based on  
your specific assay  
requirements.

## Immunogen Information

### Gene ID

91607

### Swiss Prot

Q7Z7L1

### Immunogen

Recombinant protein (or fragment). This information is considered to be commercially sensitive.

### Synonyms

SLFN8/9

## Contact

☎ | 400-999-6126

✉ | [cn.market@abclonal.com.cn](mailto:cn.market@abclonal.com.cn)

🌐 | [www.abclonal.com.cn](http://www.abclonal.com.cn)

## Product Information

### Source

Rabbit

### Isotype

IgG

### Purification

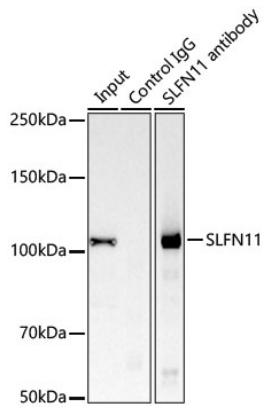
Affinity purification

### Storage

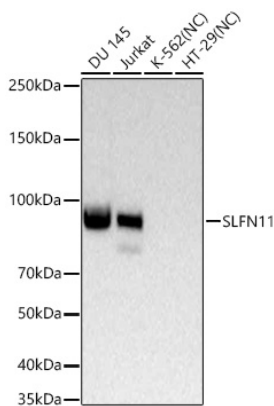
Store at -20°C. Avoid freeze / thaw cycles.

Buffer: PBS containing 50% glycerol and 0.05% BSA, preserved with proclin300 or sodium azide (as specified on the Certificate of Analysis), pH 7.3.

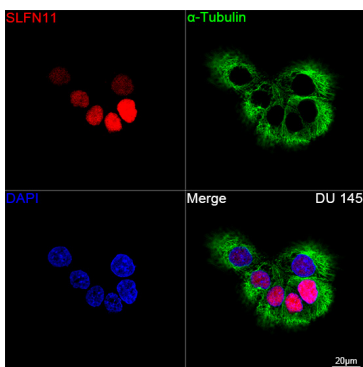
## Validation Data



Immunoprecipitation of SLFN11 from 300 µg extracts of Jurkat cells was performed using 0.5 µg of SLFN11 Rabbit mAb (A27142). Rabbit Control IgG (AC005) was used to precipitate the Control IgG sample. IP samples were eluted with 1X Laemmli Buffer. The Input lane represents 10% of the total input. Western blot analysis of immunoprecipitates was conducted using SLFN11 Rabbit mAb (A27142) at a dilution of 1 : 1000.



Western blot analysis of various lysates using SLFN11 Rabbit mAb (A27142) at 1:5000 dilution incubated at room temperature for 1.5 hours.  
 Secondary antibody: HRP-conjugated Goat anti-Rabbit IgG (H+L) (AS014) at 1:10000 dilution.  
 Lysates/proteins: 25 µg per lane.  
 Blocking buffer: 3% nonfat dry milk in TBST.  
 Detection: ECL Basic Kit (RM00020).  
 Negative control (NC): K-562, HT-29.  
 Exposure time: 45 s.



Confocal imaging of DU 145 cells using SLFN11 Rabbit mAb (A27142, dilution 1:200) followed by a further incubation with Cy3 Goat Anti-Rabbit IgG (H+L) (AS007, dilution 1:500) (Red). The cells were counterstained with  $\alpha$ -Tubulin Mouse mAb (AC012, dilution 1:400) followed by incubation with ABflo® 488-conjugated Goat Anti-Mouse IgG (H+L) Ab (AS076, dilution 1:500) (Green). DAPI was used for nuclear staining (Blue). Objective: 100x.