

# APC Rabbit anti-Mouse CD103 mAb

Catalog No.: A27134

## Basic Information

### Observed MW

**Calculated MW**  
129kDa

**Category**  
Primary antibody

**Applications**  
FC

**Cross-Reactivity**  
Mouse

**CloneNo number**  
ARC69162

**Conjugate**  
APC. Ex:650nm. Em:660nm.

## Background

Predicted to enable metal ion binding activity. Predicted to act upstream of or within cell adhesion and integrin-mediated signaling pathway. Located in external side of plasma membrane. Is expressed in several structures, including alimentary system; genitourinary system; lymph node; nasal septum; and nucleus pulposus. Orthologous to human ITGAE (integrin subunit alpha E).

## Recommended Dilutions

**FC** 5 µl per 10<sup>6</sup> cells in  
100 µl volume

## Immunogen Information

Gene ID	Swiss Prot
16407	Q60677

### Immunogen

Recombinant protein (or fragment). This information is considered to be commercially sensitive.

### Synonyms

CD103; aM290; alpha-E1; A530055J10; alpha-M290

## Contact

☎	400-999-6126
✉	cn.market@abclonal.com.cn
🌐	www.abclonal.com.cn

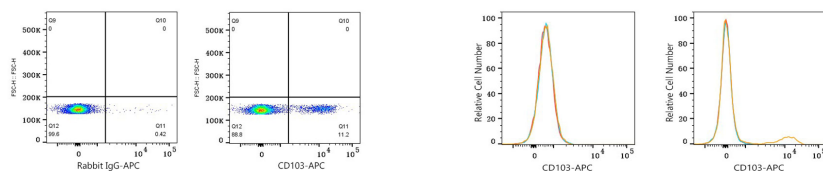
## Product Information

Source	Isotype	Purification
Rabbit	IgG	Affinity purification

### Storage

Store at 2-8°C. Avoid freeze.  
Buffer: PBS with 0.09% Sodium azide, 0.2% BSA, pH7.3.

## Validation Data



Flow cytometry:  $1 \times 10^6$  C57BL/6 mouse splenocytes cells were surface-stained with APC Rabbit IgG isotype control (A24173,5  $\mu$ l/Test,left) or APC Rabbit anti-Mouse CD103 mAb (A27134,5  $\mu$ l/Test,right).

Flow cytometry:  $1 \times 10^6$  NIH/3T3 cells (negative control,left) and C57BL/6 mouse splenocytes cells (right) were surface-stained with APC Rabbit anti-Mouse CD103 mAb (A27134,5  $\mu$ l/Test,orange line) or APC Rabbit IgG isotype control (A24173,5  $\mu$ l/Test,blue line). Non-fluorescently stained cells were used as blank control (red line).