

PE Rabbit anti-Human CPT1A mAb

Catalog No.: A27106

Basic Information

Observed MW

Calculated MW

88kDa

Category

Primary antibody

Applications

FC (intra)

Cross-Reactivity

Human

CloneNo number

ARC70823

Conjugate

PE. Ex:565nm. Em:574nm.

Background

The mitochondrial oxidation of long-chain fatty acids is initiated by the sequential action of carnitine palmitoyltransferase I (which is located in the outer membrane and is detergent-labile) and carnitine palmitoyltransferase II (which is located in the inner membrane and is detergent-stable), together with a carnitine-acylcarnitine translocase. CPT I is the key enzyme in the carnitine-dependent transport across the mitochondrial inner membrane and its deficiency results in a decreased rate of fatty acid beta-oxidation. Alternatively spliced transcript variants encoding different isoforms have been found for this gene.

Recommended Dilutions

FC (intra) 5 µl per 10⁶ cells in
100 µl volume

Immunogen Information

Gene ID

1374

Swiss Prot

P50416

Immunogen

Recombinant protein (or fragment). This information is considered to be commercially sensitive.

Synonyms

CPT1; CPT1-L; L-CPT1

Contact

 | 400-999-6126

 | cn.market@abclonal.com.cn

 | www.abclonal.com.cn

Product Information

Source

Rabbit

Isotype

IgG

Purification

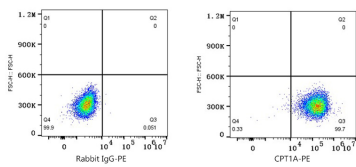
Affinity purification

Storage

Store at 2-8°C. Avoid freeze.

Buffer: PBS with 0.09% Sodium azide, 0.2% BSA, pH7.3.

Validation Data



Flow cytometry: 1X10⁶ SK-OV-3 cells were intracellularly-stained with PE Rabbit IgG isotype control (A24172,5 µl/Test,left) or PE Rabbit anti-Human CPT1A mAb (A27106,5 µl/Test,right).