

ABflo® 610 Rabbit anti-Human CD26/DPP4 mAb

Catalog No.: A26908

Basic Information

Observed MW

Refer to figures

Calculated MW

88kDa

Category

Primary antibody

Applications

FC

Cross-Reactivity

Human

CloneNo number

ARC59223

Conjugate

ABflo® 610. Ex:421nm. Em:612nm.

Recommended Dilutions

FC 5 µl per 10⁶ cells in
100 µl volume

Background

The DPP4 gene encodes dipeptidyl peptidase 4, which is identical to adenosine deaminase complexing protein-2, and to the T-cell activation antigen CD26. It is an intrinsic type II transmembrane glycoprotein and a serine exopeptidase that cleaves X-proline dipeptides from the N-terminus of polypeptides. Dipeptidyl peptidase 4 is highly involved in glucose and insulin metabolism, as well as in immune regulation. This protein was shown to be a functional receptor for Middle East respiratory syndrome coronavirus (MERS-CoV), and protein modeling suggests that it may play a similar role with SARS-CoV-2, the virus responsible for COVID-19.

Immunogen Information

Gene ID

1803

Swiss Prot

P27487

Immunogen

Recombinant protein (or fragment). This information is considered to be commercially sensitive.

Synonyms

CD26; ADABP; ADCP2; DPPIV; TP103

Contact

☎ | 400-999-6126

✉ | cn.market@abclonal.com.cn

🌐 | www.abclonal.com.cn

Product Information

Source

Rabbit

Isotype

IgG

Purification

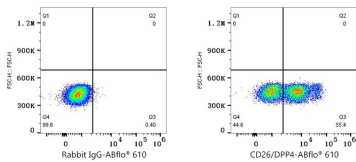
Affinity purification

Storage

Store at 2-8°C. Avoid freeze.

Buffer: PBS with 0.09% Sodium azide, 0.2% BSA, pH7.3.

Validation Data



Flow cytometry: 1X10⁶ Human PBMC were surface-stained with ABflo® 610 Rabbit IgG isotype control (A25826,5 µl/Test,left) or ABflo® 610 Rabbit anti-Human CD26/DPP4 mAb (A26908,5 µl/Test,right). Cells in the lymphocyte gate were used for analysis.