

APC Mouse anti-Human CD11b mAb

Catalog No.: A26893

Basic Information

Observed MW

Calculated MW

127kDa

Category

Primary antibody

Applications

FC

Cross-Reactivity

Human

CloneNo number

AMC0709

Conjugate

APC. Ex:650nm. Em:660nm.

Background

This gene encodes the integrin alpha M chain. Integrins are heterodimeric integral membrane proteins composed of an alpha chain and a beta chain. This I-domain containing alpha integrin combines with the beta 2 chain (ITGB2) to form a leukocyte-specific integrin referred to as macrophage receptor 1 ('Mac-1'), or inactivated-C3b (iC3b) receptor 3 ('CR3'). The alpha M beta 2 integrin is important in the adherence of neutrophils and monocytes to stimulated endothelium, and also in the phagocytosis of complement coated particles. Multiple transcript variants encoding different isoforms have been found for this gene.

Recommended Dilutions

FC 5 µl per 10⁶ cells in
100 µl volume

Immunogen Information

Gene ID

3684

Swiss Prot

P11215

Immunogen

Recombinant protein (or fragment). This information is considered to be commercially sensitive.

Synonyms

CR3A; MO1A; CD11B; MAC-1; MAC1A; SLEB6

Contact

☎ | 400-999-6126

✉ | cn.market@abclonal.com.cn

🌐 | www.abclonal.com.cn

Product Information

Source

Mouse

Isotype

IgG

Purification

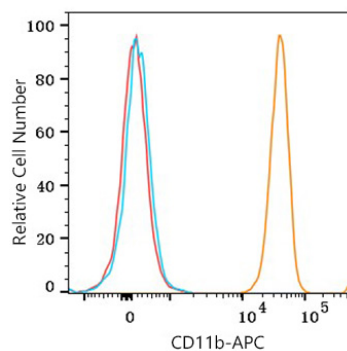
Affinity purification

Storage

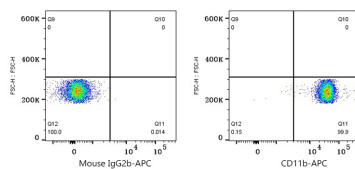
Store at 2-8°C. Avoid freeze.

Buffer: PBS with 0.09% Sodium azide, 0.2% BSA, pH7.3.

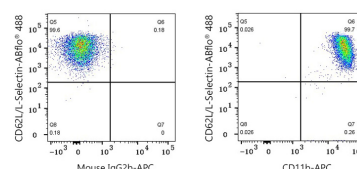
Validation Data



Flow cytometry: 1×10^6 Human peripheral blood granulocytes were surface-stained with APC Mouse anti-Human CD11b mAb (A26893, 5 μ l/Test, orange line) or APC Mouse IgG2b isotype control (A22884, 5 μ l/Test, blue line). Non-fluorescently stained cells were used as blank control (red line).



Flow cytometry: 1×10^6 Human peripheral blood granulocytes were surface-stained with APC Mouse IgG2b isotype control (A22884, 5 μ l/Test, left) or APC Mouse anti-Human CD11b mAb (A26893, 5 μ l/Test, right). Cells in the granulocytes gate were used for analysis.



Flow cytometry: 1×10^6 Human peripheral blood granulocytes were surface-stained with ABflo® 488 Rabbit anti-Human CD62L/Selectin mAb (A23020, 5 μ l/Test) and APC Mouse IgG2b isotype control (A22884, 5 μ l/Test, left) or APC Mouse anti-Human CD11b mAb (A26893, 5 μ l/Test, right). Cells in the granulocytes gate were used for analysis.