

ABflo® 700 Rabbit anti-Human CD185/CXCR5 mAb

Catalog No.: A26891

Basic Information

Observed MW

Calculated MW

42kDa

Category

Primary antibody

Applications

FC

Cross-Reactivity

Human

CloneNo number

ARC62172

Conjugate

ABflo® 700. Ex:690nm. Em:713nm.

Background

This gene encodes a multi-pass membrane protein that belongs to the CXC chemokine receptor family. It is expressed in mature B-cells and Burkitt's lymphoma. This cytokine receptor binds to B-lymphocyte chemoattractant (BLC), and is involved in B-cell migration into B-cell follicles of spleen and Peyer patches. Alternatively spliced transcript variants encoding different isoforms have been described for this gene.

Recommended Dilutions

FC 5 µl per 10⁶ cells in
100 µl volume

Immunogen Information

Gene ID

643

Swiss Prot

P32302

Immunogen

Recombinant protein (or fragment). This information is considered to be commercially sensitive.

Synonyms

BLR1; CD185; MDR15

Contact

 | 400-999-6126

 | cn.market@abclonal.com.cn

 | www.abclonal.com.cn

Product Information

Source

Rabbit

Isotype

IgG

Purification

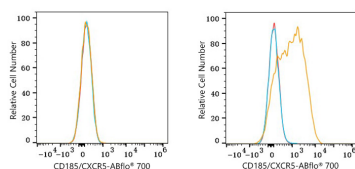
Affinity purification

Storage

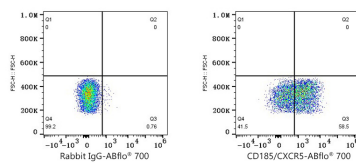
Store at 2-8°C. Avoid freeze.

Buffer: PBS with 0.09% Sodium azide, 0.2% BSA, pH7.3.

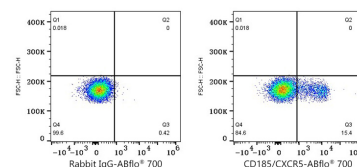
Validation Data



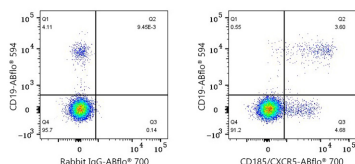
Flow cytometry: 1×10^6 HeLa cells (negative control, left) and Daudi (right) cells were surface-stained with ABflo® 700 Rabbit anti-Human CD185/CXCR5 mAb (A26891, 5 μ l/Test, orange line) or ABflo® 700 Rabbit IgG isotype control (A25976, 5 μ l/Test, blue line). Non-fluorescently stained cells were used as blank control (red line).



Flow cytometry: 1×10^6 Daudi cells were surface-stained with ABflo® 700 Rabbit IgG isotype control (A25976, 5 μ l/Test, left) or ABflo® 700 Rabbit anti-Human CD185/CXCR5 mAb (A26891, 5 μ l/Test, right).



Flow cytometry: 1×10^6 Human PBMC were surface-stained with ABflo® 700 Rabbit IgG isotype control (A25976, 5 μ l/Test, left) or ABflo® 700 Rabbit anti-Human CD185/CXCR5 mAb (A26891, 5 μ l/Test, right).



Flow cytometry: 1×10^6 Human PBMC were surface-stained with ABflo® 594 Mouse anti-Human CD19 mAb (5 μ l/Test) and ABflo® 700 Rabbit IgG isotype control (A25976, 5 μ l/Test, left) or ABflo® 700 Rabbit anti-Human CD185/CXCR5 mAb (A26891, 5 μ l/Test, right). Cells in the lymphocyte gate were used for analysis.