

APC Rabbit anti-Human LGR5 (GPR49) mAb

Catalog No.: A26864

Basic Information

Observed MW

Calculated MW

100kDa

Category

Primary antibody

Applications

FC

Cross-Reactivity

Human

CloneNo number

ARC71071

Conjugate

APC. Ex:650nm. Em:660nm.

Background

The protein encoded by this gene is a leucine-rich repeat-containing receptor (LGR) and member of the G protein-coupled, 7-transmembrane receptor (GPCR) superfamily. The encoded protein is a receptor for R-spondins and is involved in the canonical Wnt signaling pathway. This protein plays a role in the formation and maintenance of adult intestinal stem cells during postembryonic development. Several transcript variants encoding different isoforms have been found for this gene.

Recommended Dilutions

FC 5 µl per 10⁶ cells in
100 µl volume

Immunogen Information

Gene ID

8549

Swiss Prot

O75473

Immunogen

Synthetic peptide. This information is considered to be commercially sensitive.

Synonyms

FEX; HG38; GPR49; GPR67; GRP49

Contact

☎ | 400-999-6126

✉ | cn.market@abclonal.com.cn

🌐 | www.abclonal.com.cn

Product Information

Source

Rabbit

Isotype

IgG

Purification

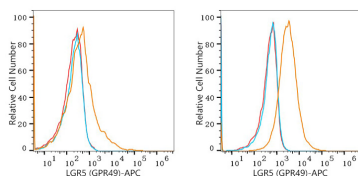
Affinity purification

Storage

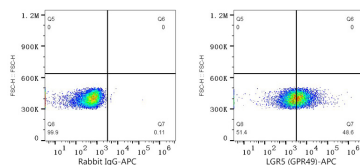
Store at 2-8°C. Avoid freeze.

Buffer: PBS with 0.09% Sodium azide, 0.2% BSA, pH7.3.

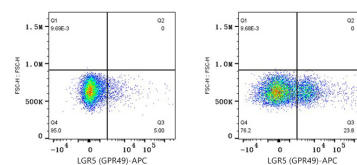
Validation Data



Flow cytometry: 1×10^6 U-937 cells (negative control, left) and Hep G2 cells (right) were surface-stained with APC Rabbit anti-Human LGR5 (GPR49) mAb (A26864, 5 μ l/Test, orange line) or APC Rabbit IgG isotype control (A24173, 5 μ l/Test, blue line). Non-fluorescently stained cells were used as blank control (red line).



Flow cytometry: 1×10^6 Hep G2 cells were surface-stained with APC Rabbit IgG isotype control (A24173, 5 μ l/Test, left) or APC Rabbit anti-Human LGR5 (GPR49) mAb (A26864, 5 μ l/Test, right).



Flow cytometry: 1×10^6 knockout (KO) SW620 cells (negative control, left) and SW620 cells (right) were surface-stained with APC Rabbit anti-Human LGR5 (GPR49) mAb (A26864, 5 μ l/Test).