

# ABflo® 450 Rabbit anti-Human $\beta$ 2 Microglobulin mAb

Catalog No.: A26843

## Basic Information

### Observed MW

### Calculated MW

14kDa

### Category

Primary antibody

### Applications

FC

### Cross-Reactivity

Human

### CloneNo number

ARC60950

### Conjugate

ABflo® 450. Ex:406nm. Em:445nm.

## Recommended Dilutions

FC 5  $\mu$ l per  $10^6$  cells in  
100  $\mu$ l volume

## Background

This gene encodes a serum protein found in association with the major histocompatibility complex (MHC) class I heavy chain on the surface of nearly all nucleated cells. The protein has a predominantly beta-pleated sheet structure that can form amyloid fibrils in some pathological conditions. The encoded antimicrobial protein displays antibacterial activity in amniotic fluid. A mutation in this gene has been shown to result in hypercatabolic hypoproteinemia.

## Immunogen Information

### Gene ID

567

### Swiss Prot

P61769

### Immunogen

Recombinant protein (or fragment). This information is considered to be commercially sensitive.

### Synonyms

IMD43

## Contact

 | 400-999-6126

 | [cn.market@abclonal.com.cn](mailto:cn.market@abclonal.com.cn)

 | [www.abclonal.com.cn](http://www.abclonal.com.cn)

## Product Information

### Source

Rabbit

### Isotype

IgG

### Purification

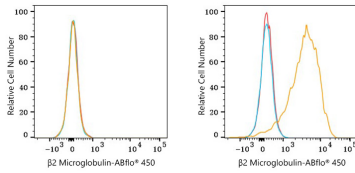
Affinity purification

### Storage

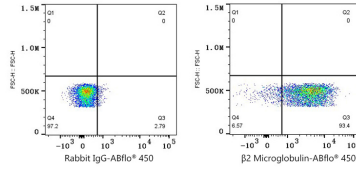
Store at 2-8°C. Avoid freeze.

Buffer: PBS with 0.09% Sodium azide, 0.2% BSA, pH7.3.

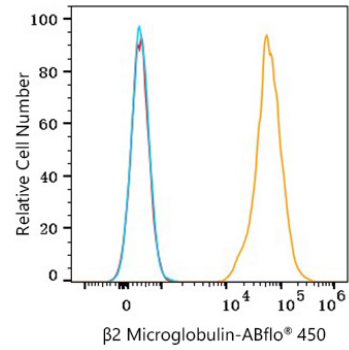
## Validation Data



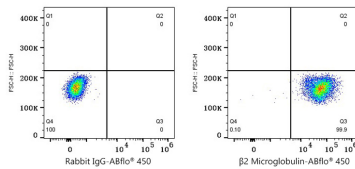
Flow cytometry:  $1 \times 10^6$  Daudi cells (negative control, left) and HeLa cells (right) were surface-stained with ABflo® 450 Rabbit anti-Human  $\beta 2$  Microglobulin mAb (A26843, 5  $\mu$ l/Test, orange line) or ABflo® 450 Rabbit IgG isotype control (5  $\mu$ l/Test, blue line). Non-fluorescently stained cells were used as blank control (red line).



Flow cytometry:  $1 \times 10^6$  HeLa cells were surface-stained with ABflo® 450 Rabbit IgG isotype control (5  $\mu$ l/Test, left) or ABflo® 450 Rabbit anti-Human  $\beta 2$  Microglobulin mAb (A26843, 5  $\mu$ l/Test, right).



Flow cytometry:  $1 \times 10^6$  Human PBMC were surface-stained with ABflo® 450 Rabbit anti-Human  $\beta 2$  Microglobulin mAb (A26843, 5  $\mu$ l/Test, orange line) or ABflo® 450 Rabbit IgG isotype control (5  $\mu$ l/Test, blue line). Non-fluorescently stained cells were used as blank control (red line). Cells in the Lymphocytes gate were used for analysis.



Flow cytometry:  $1 \times 10^6$  Human PBMC were surface-stained with ABflo® 450 Rabbit IgG isotype control (5  $\mu$ l/Test, left) or ABflo® 450 Rabbit anti-Human  $\beta 2$  Microglobulin mAb (A26843, 5  $\mu$ l/Test, right). Cells in the Lymphocytes gate were used for analysis.