

ABflo® 700 Rabbit anti-Human HER2/ErbB2 mAb

Catalog No.: A26813

Basic Information

Observed MW

Calculated MW

138kDa

Category

Primary antibody

Applications

FC

Cross-Reactivity

Human

CloneNo number

ARC5137-01

Conjugate

ABflo® 700. Ex:690nm. Em:713nm.

Background

This gene encodes a member of the epidermal growth factor (EGF) receptor family of receptor tyrosine kinases. This protein has no ligand binding domain of its own and therefore cannot bind growth factors. However, it does bind tightly to other ligand-bound EGF receptor family members to form a heterodimer, stabilizing ligand binding and enhancing kinase-mediated activation of downstream signalling pathways, such as those involving mitogen-activated protein kinase and phosphatidylinositol-3 kinase. Allelic variations at amino acid positions 654 and 655 of isoform a (positions 624 and 625 of isoform b) have been reported, with the most common allele, Ile654/Ile655, shown here. Amplification and/or overexpression of this gene has been reported in numerous cancers, including breast and ovarian tumors. Alternative splicing results in several additional transcript variants, some encoding different isoforms and others that have not been fully characterized.

Recommended Dilutions

FC 5 µl per 10⁶ cells in
100 µl volume

Immunogen Information

Gene ID

2064

Swiss Prot

P04626

Immunogen

Recombinant protein (or fragment). This information is considered to be commercially sensitive.

Synonyms

NEU; NGL; HER2; TKR1; CD340; HER-2; VSCN2; MLN 19; MLN-19; c-ERB2; c-ERB-2; HER-2/neu; p185(erbB2)

Contact

☎ | 400-999-6126

✉ | cn.market@abclonal.com.cn

🌐 | www.abclonal.com.cn

Product Information

Source

Rabbit

Isotype

IgG

Purification

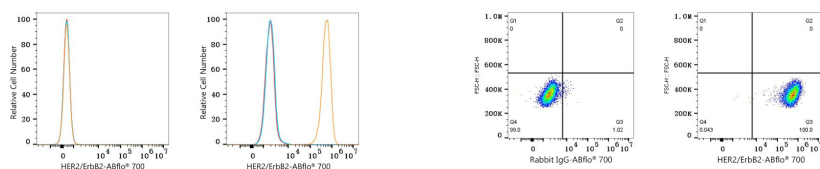
Affinity purification

Storage

Store at 2-8°C. Avoid freeze.

Buffer: PBS with 0.09% Sodium azide, 0.2% BSA, pH7.3.

Validation Data



Flow cytometry: 1X10⁶ HL-60 cells (negative control, left) and SK-BR-3 cells (right) were surface-stained with ABflo® 700 Rabbit anti-Human HER2/ErbB2 mAb (A26813, 5 µl/Test, orange line) or ABflo® 700 Rabbit IgG isotype control (A25976, 5 µl/Test, blue line). Non-fluorescently stained cells were used as blank control (red line).

Flow cytometry: 1X10⁶ SK-BR-3 cells were surface-stained with ABflo® 700 Rabbit IgG isotype control (A25976, 5 µl/Test, left) or ABflo® 700 Rabbit anti-Human HER2/ErbB2 mAb (A26813, 5 µl/Test, right).