

# ABflo® 610 Rabbit anti-Human EGFR mAb

Catalog No.: A26809

## Basic Information

### Observed MW

### Calculated MW

44kDa/69kDa/77kDa/134kDa

### Category

Primary antibody

### Applications

FC

### Cross-Reactivity

Human

### CloneNo number

ARC61443

### Conjugate

ABflo® 610. Ex:421nm. Em:612nm.

## Background

The protein encoded by this gene is a transmembrane glycoprotein that is a member of the protein kinase superfamily. This protein is a receptor for members of the epidermal growth factor family. EGFR is a cell surface protein that binds to epidermal growth factor, thus inducing receptor dimerization and tyrosine autophosphorylation leading to cell proliferation. Mutations in this gene are associated with lung cancer. EGFR is a component of the cytokine storm which contributes to a severe form of Coronavirus Disease 2019 (COVID-19) resulting from infection with severe acute respiratory syndrome coronavirus-2 (SARS-CoV-2).

## Recommended Dilutions

FC 5 µl per 10<sup>6</sup> cells in  
100 µl volume

## Immunogen Information

### Gene ID

1956

### Swiss Prot

P00533

### Immunogen

Recombinant protein (or fragment). This information is considered to be commercially sensitive.

### Synonyms

ERBB; ERRP; HER1; mENA; ERBB1; PIG61; NISBD2

## Contact

☎ | 400-999-6126

✉ | [cn.market@abclonal.com.cn](mailto:cn.market@abclonal.com.cn)

🌐 | [www.abclonal.com.cn](http://www.abclonal.com.cn)

## Product Information

### Source

Rabbit

### Isotype

IgG

### Purification

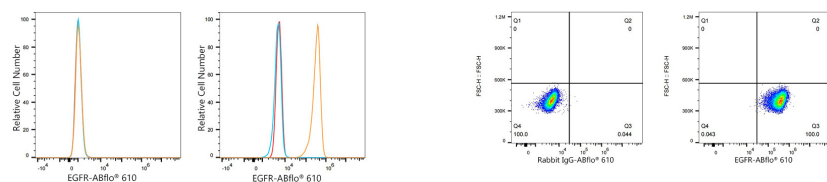
Affinity purification

### Storage

Store at 2-8°C. Avoid freeze.

Buffer: PBS with 0.09% Sodium azide, 0.2% BSA, pH7.3.

## Validation Data



Flow cytometry:  $1 \times 10^6$  Jurkat cells (negative control, left) and A-431 cells (right) were surface-stained with ABflo® 610 Rabbit anti-Human EGFR mAb (A26809, 5  $\mu$ l/Test, orange line) or ABflo® 610 Rabbit IgG isotype control (A25826, 5  $\mu$ l/Test, blue line). Non-fluorescently stained cells were used as blank control (red line).

Flow cytometry:  $1 \times 10^6$  A-431 cells were surface-stained with ABflo® 610 Rabbit IgG isotype control (A25826, 5  $\mu$ l/Test, left) or ABflo® 610 Rabbit anti-Human EGFR mAb (A26809, 5  $\mu$ l/Test, right).