

ABflo® 488 Conjugated TOM20 Rabbit mAb

Catalog No.: A26783

Recombinant

1 Publications

Basic Information

Observed MW

16 kDa

Calculated MW

16 kDa

Category

Primary antibody

Applications

WB,IF/ICC,IF-F,IF-P

Cross-Reactivity

Human, Mouse, Rat

CloneNo number

ARC5002-01-ABflo488

Conjugate

ABflo® 488. Ex:491nm. Em:516nm.

Recommended Dilutions

| | |
|---------------|------------------|
| WB | 1:5000 - 1:30000 |
| IF/ICC | 1:200 - 1:1000 |
| IF-F | 1:200 - 1:400 |
| IF-P | 1:200 - 1:1000 |

Contact

☎ | 400-999-6126

✉ | cn.market@abclonal.com.cn

🌐 | www.abclonal.com.cn

Background

Enables protein-transporting ATPase activity and unfolded protein binding activity. Involved in protein targeting to mitochondrion. Located in mitochondria-associated endoplasmic reticulum membrane and mitochondrial outer membrane.

Immunogen Information

Gene ID

9804

Swiss Prot

Q15388

Immunogen

Recombinant protein (or fragment). This information is considered to be commercially sensitive.

Synonyms

MAS20; MOM19; TOM20

Product Information

Source

Rabbit

Isotype

IgG

Purification

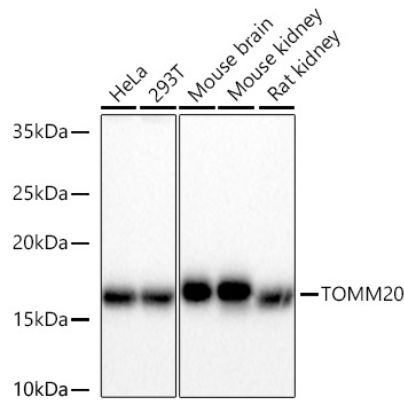
Affinity purification

Storage

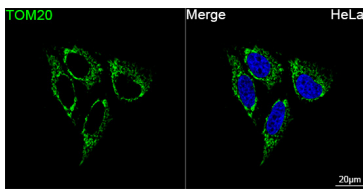
Store at -20°C. Avoid freeze.

Buffer: PBS with 0.09% sodium azide, 0.2% BSA, 50% glycerol, pH7.3.

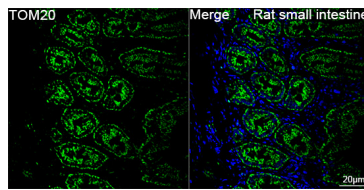
Validation Data



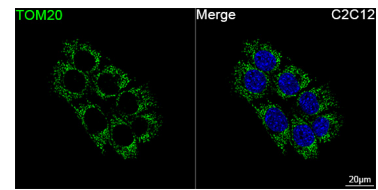
Western blot analysis of various lysates using ABflo® 488 Conjugated TOM20 Rabbit mAb (A26783) at 1:5000 dilution incubated overnight at 4°C. Secondary antibody: HRP-conjugated Goat anti-Rabbit IgG (H+L) (AS014) at 1:10000 dilution. Lysates/proteins: 25 µg per lane. Blocking buffer: 3% nonfat dry milk in TBST. Detection: ECL Basic Kit (RM00020). Exposure time: 1s.



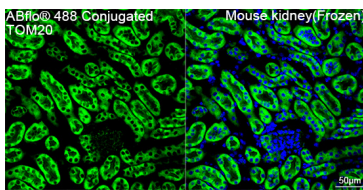
Confocal imaging of HeLa cells using ABflo® 488 Conjugated TOM20 Rabbit mAb (A26783, dilution 1:1000). DAPI was used for nuclear staining (Blue). Objective: 100x.



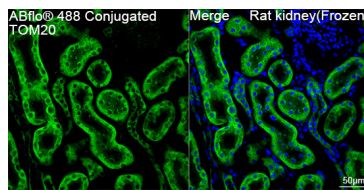
Confocal imaging of paraffin-embedded Rat small intestine tissue using ABflo® 488 Conjugated TOM20 Rabbit mAb (A26783, dilution 1:1000). DAPI was used for nuclear staining (Blue). High pressure antigen retrieval performed with 0.01M Citrate Buffer (pH 6.0) prior to IF staining. Objective: 40x.



Confocal imaging of C2C12 cells using ABflo® 488 Conjugated TOM20 Rabbit mAb (A26783, dilution 1:1000). DAPI was used for nuclear staining (Blue). Objective: 100x.



Confocal imaging of frozen sections of Mouse kidney tissue using ABflo® 488 Conjugated TOM20 Rabbit mAb (A26783, dilution 1:200) (Green). DAPI was used for nuclear staining (Blue). Microwave antigen retrieval performed with 0.01M Citrate Buffer (pH 6.0) prior to IF staining. Objective: 40x.



Confocal imaging of frozen sections of Rat kidney tissue using ABflo® 488 Conjugated TOM20 Rabbit mAb (A26783, dilution 1:200) (Green). DAPI was used for nuclear staining (Blue). Microwave antigen retrieval performed with 0.01M Citrate Buffer (pH 6.0) prior to IF staining. Objective: 40x.