

ABflo® 647 Conjugated GFAP Rabbit mAb

Catalog No.: A26779 **Recombinant** **1 Publications**

Basic Information

Observed MW

Refer to figures

Calculated MW

50 kDa

Category

Primary antibody

Applications

IF-F,IF-P

Cross-Reactivity

Human, Mouse, Rat

CloneNo number

ARC0206-ABf647

Conjugate

ABflo® 647. Ex:648nm. Em:664nm.

Recommended Dilutions

IF-F 1:200 - 1:1000

IF-P 1:200 - 1:1000

Background

This gene encodes one of the major intermediate filament proteins of mature astrocytes. It is used as a marker to distinguish astrocytes from other glial cells during development. Mutations in this gene cause Alexander disease, a rare disorder of astrocytes in the central nervous system. Alternative splicing results in multiple transcript variants encoding distinct isoforms.

Immunogen Information

Gene ID

2670

Swiss Prot

P14136

Immunogen

Synthetic peptide. This information is considered to be commercially sensitive.

Synonyms

ALXDRD

Contact

 | 400-999-6126

 | cn.market@abclonal.com.cn

 | www.abclonal.com.cn

Product Information

Source

Rabbit

Isotype

IgG

Purification

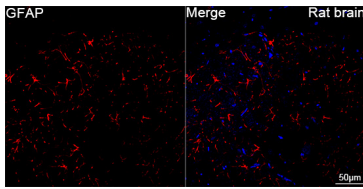
Affinity purification

Storage

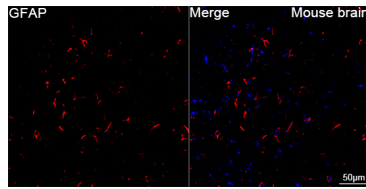
Store at -20°C. Avoid freeze.

Buffer: PBS containing 50% glycerol and 0.2% BSA, preserved with proclin300 or sodium azide (as specified on the Certificate of Analysis), pH 7.3.

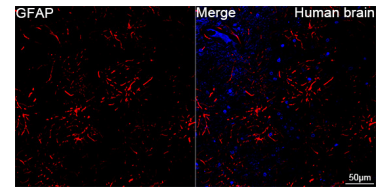
Validation Data



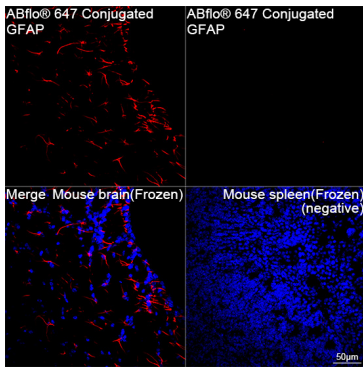
Confocal imaging of paraffin-embedded Rat brain tissue using ABflo® 647 Conjugated GFAP Rabbit mAb (A26779, dilution 1:1000). DAPI was used for nuclear staining (Blue). Microwave antigen retrieval performed with 0.01M Citrate Buffer(pH 6.0) prior to IF staining. Objective: 40x.



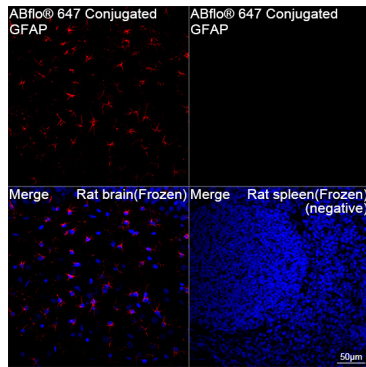
Confocal imaging of paraffin-embedded Mouse brain tissue using ABflo® 647 Conjugated GFAP Rabbit mAb (A26779, dilution 1:1000). DAPI was used for nuclear staining (Blue). Microwave antigen retrieval performed with 0.01M Citrate Buffer(pH 6.0) prior to IF staining. Objective: 40x.



Confocal imaging of paraffin-embedded Human brain tissue using ABflo® 647 Conjugated GFAP Rabbit mAb (A26779, dilution 1:1000). DAPI was used for nuclear staining (Blue). Microwave antigen retrieval performed with 0.01M Citrate Buffer(pH 6.0) prior to IF staining. Objective: 40x.



Confocal imaging of frozen sections of Mouse brain tissue and Mouse spleen tissue (negative) using ABflo® 647 Conjugated GFAP Rabbit mAb (A26779, dilution 1:200) (Red). DAPI was used for nuclear staining (Blue). Microwave antigen retrieval performed with 0.01M Citrate Buffer (pH 6.0) prior to IF staining. Objective: 40x.



Confocal imaging of frozen sections of Rat brain tissue and Rat spleen tissue (negative) using ABflo® 647 Conjugated GFAP Rabbit mAb (A26779, dilution 1:200) (Red). DAPI was used for nuclear staining (Blue). Microwave antigen retrieval performed with 0.01M Citrate Buffer (pH 6.0) prior to IF staining. Objective: 40x.