

Biotin Rabbit anti-Human/Monkey CD16 mAb

Catalog No.: A26772

Basic Information

Observed MW

Calculated MW
29KDa/26KDa

Category
Primary antibody

Applications
FC

Cross-Reactivity
Human, Cynomolgus

CloneNo number
ARC59985

Conjugate
Biotin

Background

This gene encodes a receptor for the Fc portion of immunoglobulin G, and it is involved in the removal of antigen-antibody complexes from the circulation, as well as other responses, including antibody dependent cellular mediated cytotoxicity and antibody dependent enhancement of virus infections. This gene (FCGR3A) is highly similar to another nearby gene (FCGR3B) located on chromosome 1. The receptor encoded by this gene is expressed on natural killer (NK) cells as an integral membrane glycoprotein anchored through a transmembrane peptide, whereas FCGR3B is expressed on polymorphonuclear neutrophils (PMN) where the receptor is anchored through a phosphatidylinositol (PI) linkage. Mutations in this gene are associated with immunodeficiency 20, and have been linked to susceptibility to recurrent viral infections, susceptibility to systemic lupus erythematosus, and alloimmune neonatal neutropenia. Alternatively spliced transcript variants encoding different isoforms have been found for this gene.

Recommended Dilutions

FC 5 μ l per 10^6 cells in
100 μ l volume

Immunogen Information

Gene ID	Swiss Prot
Hu 2214/2215 Cyon 102140945	P08637/O75015

Immunogen

Recombinant protein (or fragment). This information is considered to be commercially sensitive.

Synonyms

CD16; FCG3; CD16A; FCGR3; IGFR3; IMD20; FCR-10; FCRIII; CD16-II; FCGRIII; FCRIIIA; FcGRIIIA

Contact

	400-999-6126
	cn.market@abclonal.com.cn
	www.abclonal.com.cn

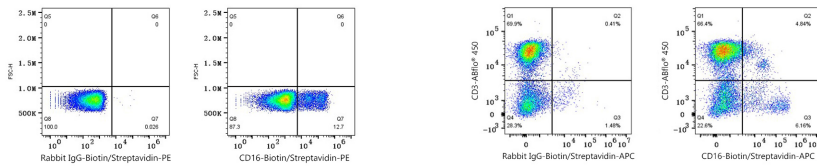
Product Information

Source	Isotype	Purification
Rabbit	IgG	Affinity purification

Storage

Store at 2-8°C. Avoid freeze.
Buffer: PBS with 0.09% Sodium azide, 0.2% BSA, pH7.3.

Validation Data



Flow cytometry: 1×10^6 Human PBMC were surface-stained with Biotin Rabbit IgG isotype control (A25626,5 $\mu\text{l}/\text{Test}$,left) or Biotin Rabbit anti-Human/Monkey CD16 mAb (A26772,5 $\mu\text{l}/\text{Test}$,right), followed by PE Streptavidin staining.

Flow cytometry: 1×10^6 Cynomolgus PBMC were surface-stained with ABflo® 450 Rabbit anti-Human/Monkey CD3 mAb (A27177,5 $\mu\text{l}/\text{Test}$) and Biotin Rabbit IgG isotype control (A25626,5 $\mu\text{l}/\text{Test}$,left) or Biotin Rabbit anti-Human/Monkey CD16 mAb (A26772,5 $\mu\text{l}/\text{Test}$,right), followed by APC Streptavidin staining. Cells in the lymphocyte gate were used for analysis.