

# TBR1 Rabbit mAb

Catalog No.: A26752 **Recombinant**

## Basic Information

### Observed MW

74kDa

### Calculated MW

74kDa

### Category

Primary antibody

### Applications

WB, IHC-P, IF/ICC, ELISA

### Cross-Reactivity

Human, Mouse, Rat

### CloneNo number

ARC3309

## Background

This gene is a member of a conserved family of genes that share a common DNA-binding domain, the T-box. T-box genes encode transcription factors involved in the regulation of numerous developmental processes. In mouse, the ortholog of this gene is expressed in the cerebral cortex, hippocampus, amygdala and olfactory bulb and is thought to play an important role in neuronal migration and axonal projection. In mouse, the C-terminal region of this protein was found to be necessary and sufficient for association with the guanylate kinase domain of calcium/calmodulin-dependent serine protein kinase.

## Recommended Dilutions

**WB** 1:1000 - 1:2000

**IHC-P** 1:200 - 1:2000

**IF/ICC** 1:200 - 1:800

**ELISA** Recommended starting concentration is 1 µg/mL. Please optimize the concentration based on your specific assay requirements.

## Immunogen Information

### Gene ID

10716

### Swiss Prot

Q16650

### Immunogen

Synthetic peptide. This information is considered to be commercially sensitive.

### Synonyms

AUTS5; IDDAS; TBR-1; TES-56

## Contact

☎ | 400-999-6126

✉ | [cn.market@abclonal.com.cn](mailto:cn.market@abclonal.com.cn)

🌐 | [www.abclonal.com.cn](http://www.abclonal.com.cn)

## Product Information

### Source

Rabbit

### Isotype

IgG

### Purification

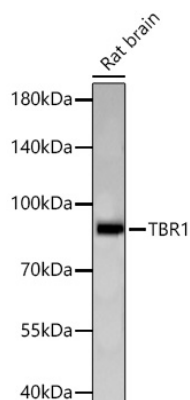
Affinity purification

### Storage

Store at -20°C. Avoid freeze / thaw cycles.

Buffer: PBS with 0.05% BSA, 40% glycerol, pH7.3.

## Validation Data



Western blot analysis of lysates from Rat brain using TBR1 Rabbit mAb (A26752) at 1:1000 dilution incubated overnight at 4°C.

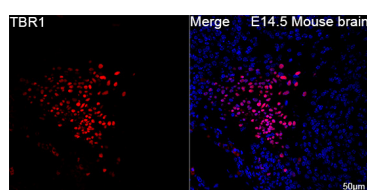
Secondary antibody: HRP-conjugated Goat anti-Rabbit IgG (H+L) (AS014) at 1:10000 dilution.

Lysates/proteins: 25 µg per lane.

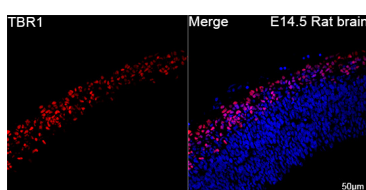
Blocking buffer: 3% nonfat dry milk in TBST.

Detection: ECL Basic Kit (RM00020).

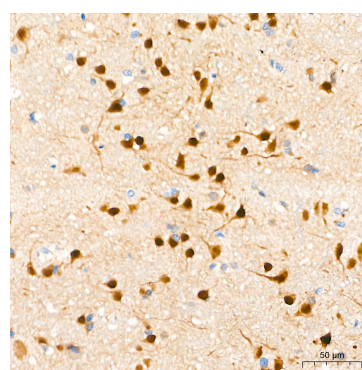
Exposure time: 90s.



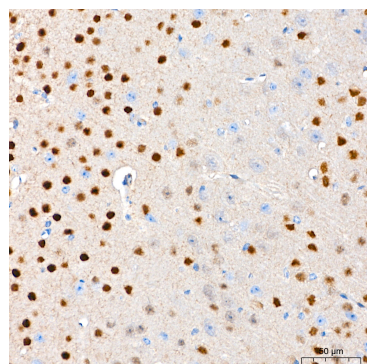
Confocal imaging of paraffin-embedded E14.5 Mouse brain tissue using TBR1 Rabbit mAb (A26752, dilution 1:200) followed by a further incubation with Cy3 Goat Anti-Rabbit IgG (H+L) (AS007, dilution 1:500) (Red). DAPI was used for nuclear staining (Blue). Microwave antigen retrieval performed with 0.01M Citrate Buffer(pH 6.0) prior to IF staining. Objective: 40x.



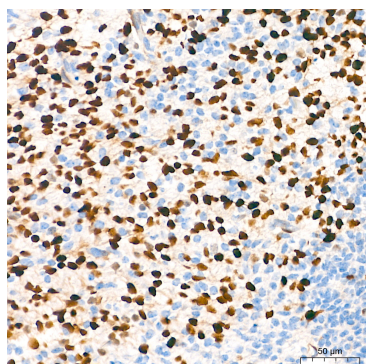
Confocal imaging of paraffin-embedded E14.5 Rat brain tissue using TBR1 Rabbit mAb (A26752, dilution 1:200) followed by a further incubation with Cy3 Goat Anti-Rabbit IgG (H+L) (AS007, dilution 1:500) (Red). DAPI was used for nuclear staining (Blue). Microwave antigen retrieval performed with 0.01M Citrate Buffer(pH 6.0) prior to IF staining. Objective: 40x.



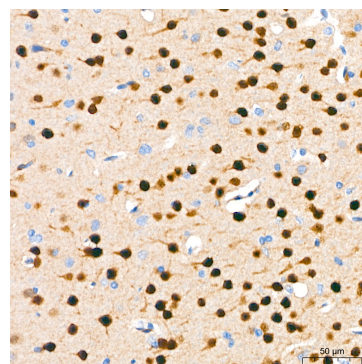
Immunohistochemistry analysis of paraffin-embedded Human brain tissue using TBR1 Rabbit mAb (A26752) at a dilution of 1:1000 (40x lens). High pressure antigen retrieval performed with 0.01M Tris-EDTA Buffer (pH 9.0) prior to IHC staining.



Immunohistochemistry analysis of paraffin-embedded Mouse brain tissue using TBR1 Rabbit mAb (A26752) at a dilution of 1:1000 (40x lens). High pressure antigen retrieval performed with 0.01M Tris-EDTA Buffer (pH 9.0) prior to IHC staining.



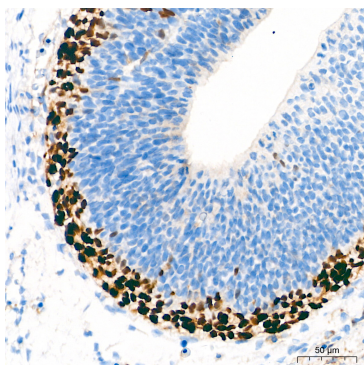
Immunohistochemistry analysis of paraffin-embedded Mouse embryo 14 and a half days tissue using TBR1 Rabbit mAb (A26752) at a dilution of 1:1000 (40x lens). High pressure antigen retrieval performed with 0.01M Tris-EDTA Buffer (pH 9.0) prior to IHC staining.



Immunohistochemistry analysis of paraffin-embedded Rat brain tissue using TBR1 Rabbit mAb (A26752) at a dilution of 1:1000 (40x lens). High pressure antigen retrieval performed with 0.01M Tris-EDTA Buffer (pH 9.0) prior to IHC staining.

## Validation Data

---



Immunohistochemistry analysis of paraffin-embedded Rat embryo 14 and a half days tissue using TBR1 Rabbit mAb (A26752) at a dilution of 1:1000 (40x lens). High pressure antigen retrieval performed with 0.01M Tris-EDTA Buffer (pH 9.0) prior to IHC staining.