

# VGLUT1 Rabbit mAb

Catalog No.: A26751 **Recombinant**

## Basic Information

### Observed MW

62 kDa

### Calculated MW

62 kDa

### Category

Primary antibody

### Applications

WB,IF-P,IHC-P,mIHC,ELISA

### Cross-Reactivity

Human, Mouse, Rat

### CloneNo number

ARC3308

## Background

The protein encoded by this gene is a vesicle-bound, sodium-dependent phosphate transporter that is specifically expressed in the neuron-rich regions of the brain. It is preferentially associated with the membranes of synaptic vesicles and functions in glutamate transport. The protein shares 82% identity with the differentiation-associated Na-dependent inorganic phosphate cotransporter and they appear to form a distinct class within the Na<sup>+</sup>/Pi cotransporter family.

## Recommended Dilutions

**WB** 1:3000 - 1:10000**IF-P** 1:200 - 1:2000**IHC-P** 1:1000 - 1:4000**mIHC** 1:200 - 1:800**ELISA** Recommended starting concentration is 1 µg/mL. Please optimize the concentration based on your specific assay requirements.

## Immunogen Information

### Gene ID

57030

### Swiss Prot

Q9P2U7

### Immunogen

Synthetic peptide. This information is considered to be commercially sensitive.

### Synonyms

BNPI; VGLUT1

## Contact

 | 400-999-6126 | [cn.market@abclonal.com.cn](mailto:cn.market@abclonal.com.cn) | [www.abclonal.com.cn](http://www.abclonal.com.cn)

## Product Information

### Source

Rabbit

### Isotype

IgG

### Purification

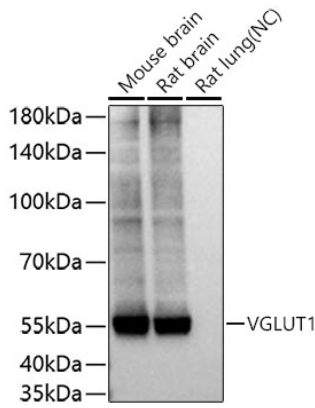
Affinity purification

### Storage

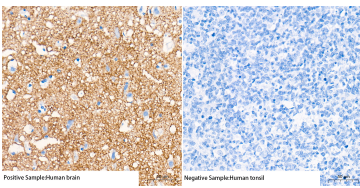
Store at -20°C. Avoid freeze / thaw cycles.

Buffer: 10 mM sodium HEPES and 150 mM NaCl with proclin300 or sodium azide (as specified on the Certificate of Analysis), 100 µg/ml BSA, 50% Glycerol, pH 7.5

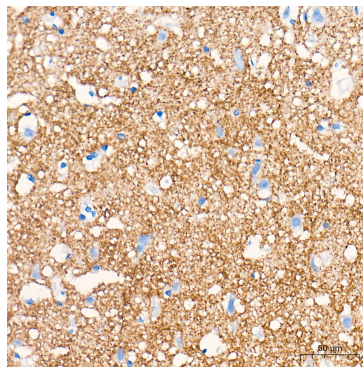
## Validation Data



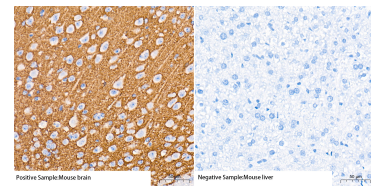
Western blot analysis of various lysates using VGLUT1 Rabbit mAb (A26751) at 1:5000 dilution incubated overnight at 4°C.  
 Secondary antibody: HRP-conjugated Goat anti-Rabbit IgG (H+L) (AS014) at 1:10000 dilution.  
 Lysates/proteins: 25 µg per lane.  
 Blocking buffer: 3% nonfat dry milk in TBST.  
 Detection: ECL Basic Kit (RM00020).  
 Negative control (NC): Rat Lung.  
 Exposure time: 5 s.



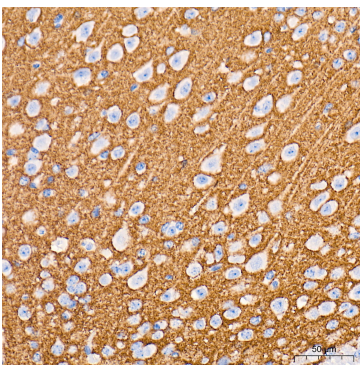
Immunohistochemistry analysis of paraffin-embedded Human brain tissue (left, Positive control) and Human tonsil tissue (right, Negative control), tissue using VGLUT1 Rabbit mAb (A26751) at a dilution of 1:2500 (40x lens). High pressure antigen retrieval performed with 0.01M Tris-EDTA Buffer (pH 9.0) prior to IHC staining.



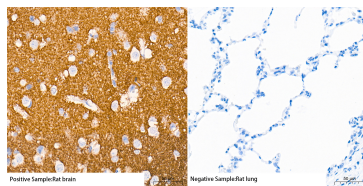
Immunohistochemistry analysis of paraffin-embedded Human brain tissue using VGLUT1 Rabbit mAb (A26751) at a dilution of 1:2500 (40x lens). High pressure antigen retrieval performed with 0.01M Tris-EDTA Buffer (pH 9.0) prior to IHC staining.



Immunohistochemistry analysis of paraffin-embedded Mouse brain tissue (left, Positive control) and Mouse liver tissue (right, Negative control), tissue using VGLUT1 Rabbit mAb (A26751) at a dilution of 1:2500 (40x lens). High pressure antigen retrieval performed with 0.01M Tris-EDTA Buffer (pH 9.0) prior to IHC staining.



Immunohistochemistry analysis of paraffin-embedded Mouse brain tissue using VGLUT1 Rabbit mAb (A26751) at a dilution of 1:2500 (40x lens). High pressure antigen retrieval performed with 0.01M Tris-EDTA Buffer (pH 9.0) prior to IHC staining.

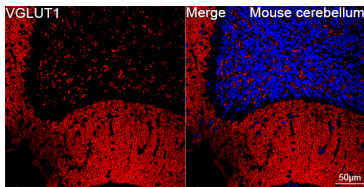


Immunohistochemistry analysis of paraffin-embedded Rat brain tissue (left, Positive control) and Rat lung tissue (right, Negative control), using VGLUT1 Rabbit mAb (A26751) at a dilution of 1:2500 (40x lens). High pressure antigen retrieval performed with 0.01M Tris-EDTA Buffer (pH 9.0) prior to IHC staining.

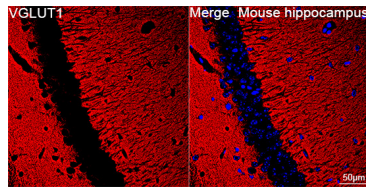


Immunohistochemistry analysis of paraffin-embedded Rat brain tissue using VGLUT1 Rabbit mAb (A26751) at a dilution of 1:2500 (40x lens). High pressure antigen retrieval performed with 0.01M Tris-EDTA Buffer (pH 9.0) prior to IHC staining.

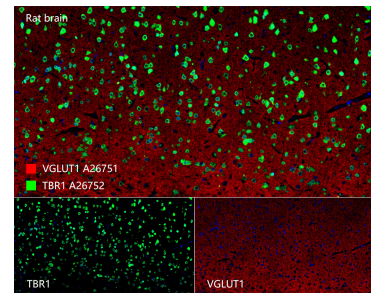
## Validation Data



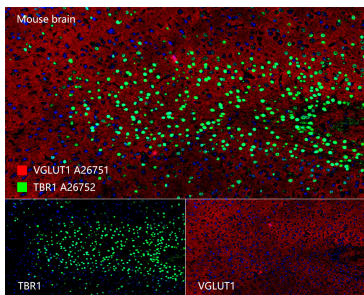
Confocal imaging of paraffin-embedded Mouse cerebellum tissue using VGLUT1 Rabbit mAb (A26751, dilution 1:200) followed by a further incubation with Cy3 Goat Anti-Rabbit IgG (H+L) (AS007, dilution 1:500) (Red). DAPI was used for nuclear staining (Blue). Microwave antigen retrieval performed with 0.01M Citrate Buffer(pH 6.0) prior to IF staining. Objective: 40x.



Confocal imaging of paraffin-embedded Mouse hippocampus tissue using VGLUT1 Rabbit mAb (A26751, dilution 1:200) followed by a further incubation with Cy3 Goat Anti-Rabbit IgG (H+L) (AS007, dilution 1:500) (Red). DAPI was used for nuclear staining (Blue). Microwave antigen retrieval performed with 0.01M Citrate Buffer(pH 6.0) prior to IF staining. Objective: 40x.



The multiplex IHC analysis on paraffin-embedded Rat brain tissue using the following specific primary antibodies and tyramide signal amplification (TSA) reagents (RK05903) : TBR1 Rabbit mAb (A26752, 1:1000) with TSA-TYR-520 (Green), and VGLUT1 Rabbit mAb (A26751, 1:500) with TSA-TYR-570 (Red). DAPI (Blue) was used for nuclear staining. Prior to multiplex IHC staining, high-pressure antigen retrieval was performed using 0.01M citrate buffer at pH 6.0. The analysis was completed using a 40x objective lens.



The multiplex IHC analysis on paraffin-embedded Mouse brain tissue using the following specific primary antibodies and tyramide signal amplification (TSA) reagents (RK05903) : TBR1 Rabbit mAb (A26752, 1:1000) with TSA-TYR-520 (Green), and VGLUT1 Rabbit mAb (A26751, 1:500) with TSA-TYR-570 (Red). DAPI (Blue) was used for nuclear staining. Prior to multiplex IHC staining, high-pressure antigen retrieval was performed using 0.01M citrate buffer at pH 6.0. The analysis was completed using a 40x objective lens.