

PE Rabbit anti-Mouse/Human CD55 mAb

Catalog No.: A26738

Basic Information

Observed MW

Calculated MW

42KDa

Category

Primary antibody

Applications

FC

Cross-Reactivity

Human, Mouse

CloneNo number

ARC60934

Conjugate

PE. Ex:565nm. Em:574nm.

Recommended Dilutions

FC 5 μ l per 10^6 cells in
100 μ l volume

Background

This gene encodes an inhibitor of both the classical and the alternative pathways of complement activation. The encoded preproprotein undergoes post-translational processing to generate a mature polypeptide anchored to the plasma membrane via a glycosylphosphatidylinositol moiety. Erythrocytes from mice deficient in the encoded protein exhibit impaired regulation of complement activation resulting in enhanced complement deposition. Mice lacking the encoded protein exhibit enhanced susceptibility to experimentally induced myasthenia gravis. This gene is located adjacent to a closely related gene on chromosome 1.

Immunogen Information

Gene ID

13136

Swiss Prot

Q61475

Immunogen

Recombinant protein (or fragment). This information is considered to be commercially sensitive.

Synonyms

Daf; Daf1; Daf-GPI; GPI-DAF

Contact

☎ | 400-999-6126

✉ | cn.market@abclonal.com.cn

🌐 | www.abclonal.com.cn

Product Information

Source

Rabbit

Isotype

IgG

Purification

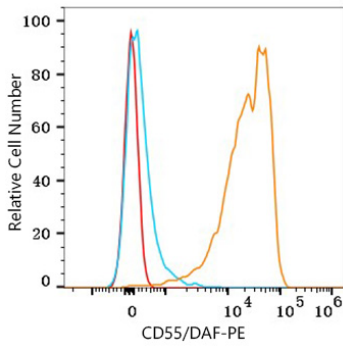
Affinity purification

Storage

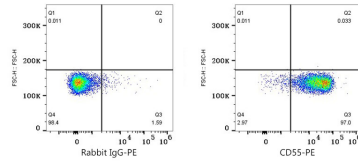
Store at 2-8°C. Avoid freeze.

Buffer: PBS with 0.09% Sodium azide, 0.2% BSA, pH7.3.

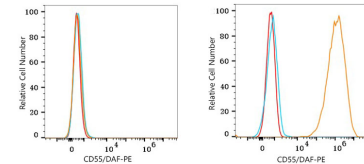
Validation Data



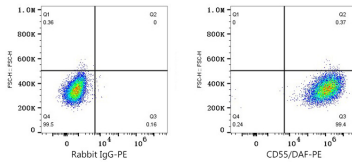
Flow cytometry: 1×10^6 BALB/c mouse splenocytes were surface-stained with PE Rabbit anti-Human/Mouse CD55/DAF mAb (A26738, $5 \mu\text{l}/\text{Test}$, orange line) or PE Rabbit IgG isotype control (A24172, $5 \mu\text{l}/\text{Test}$, blue line). Non-fluorescently stained cells were used as blank control (red line).



Flow cytometry: 1×10^6 BALB/c mouse splenocytes were surface-stained with PE Rabbit IgG isotype control (A24172, $5 \mu\text{l}/\text{Test}$, left) or PE Rabbit anti-Human/Mouse CD55/DAF mAb (A26738, $5 \mu\text{l}/\text{Test}$, right).



Flow cytometry: 1×10^6 SH-SY5Y cells (Low Expression, left) and HeLa cells (right) were surface-stained with PE Rabbit anti-Human/Mouse CD55/DAF mAb (A26738, $5 \mu\text{l}/\text{Test}$, orange line) or PE Rabbit IgG isotype control (A24172, $5 \mu\text{l}/\text{Test}$, blue line). Non-fluorescently stained cells were used as blank control (red line).



Flow cytometry: 1×10^6 HeLa cells were surface-stained with PE Rabbit IgG isotype control (A24172, $5 \mu\text{l}/\text{Test}$, left) or PE Rabbit anti-Human/Mouse CD55/DAF mAb (A26738, $5 \mu\text{l}/\text{Test}$, right).