

ABflo® 700 Rabbit anti-Human/Monkey Ki67 mAb

Catalog No.: A26737

Basic Information

Observed MW

Calculated MW

319kDa/359kDa

Category

Primary antibody

Applications

FC (intra)

Cross-Reactivity

Human, Cynomolgus

CloneNo number

ARC57564

Conjugate

ABflo® 700. Ex:690nm. Em:713nm.

Recommended Dilutions

FC (intra) 5 µl per 10⁶ cells in
100 µl volume

Background

Enables protein C-terminus binding activity. Involved in regulation of chromosome segregation and regulation of mitotic nuclear division. Located in chromosome; nuclear body; and nucleolus. Colocalizes with condensed chromosome. Implicated in Crohn's disease; breast cancer; human immunodeficiency virus infectious disease; and pancreatic cancer. Biomarker of several diseases, including Barrett's esophagus; autoimmune disease of musculoskeletal system (multiple); endocrine gland cancer (multiple); gastrointestinal system cancer (multiple); and interstitial cystitis.

Immunogen Information

Gene ID

Hu 4288 Cyon 102135895

Swiss Prot

P46013

Immunogen

Synthetic peptide. This information is considered to be commercially sensitive.

Synonyms

KIA; MIB-; MIB-1; PPP1R105

Contact

☎ | 400-999-6126

✉ | cn.market@abclonal.com.cn

🌐 | www.abclonal.com.cn

Product Information

Source

Rabbit

Isotype

IgG

Purification

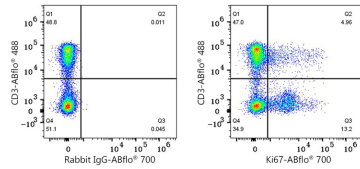
Affinity purification

Storage

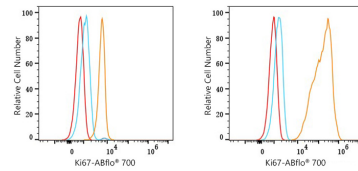
Store at 2-8°C. Avoid freeze.

Buffer: PBS with 0.09% Sodium azide, 0.2% BSA, pH7.3.

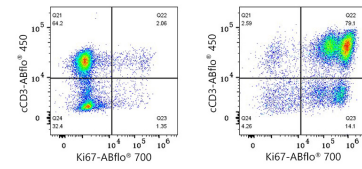
Validation Data



Flow cytometry: 1×10^6 Cynomolgus peripheral blood mononuclear cells were surface-stained with ABflo® 488 Rabbit anti-Human/Monkey CD3 mAb (A26283, 5 μ l/Test) and then intracellularly-stained with ABflo® 700 Rabbit IgG isotype control (A25976, 5 μ l/Test, left) or ABflo® 700 Rabbit anti-Human/Monkey Ki67 mAb (A26737, 5 μ l/Test, right). Cells in the lymphocyte gate were used for analysis.



Flow cytometry: 1×10^6 knockout (KO) HeLa cells (negative control, left) and HeLa cells (right) were intracellularly-stained with ABflo® 700 Rabbit anti-Human/Monkey Ki67 mAb (A26737, 5 μ l/Test, orange line) or ABflo® 700 Rabbit IgG isotype control (A25976, 5 μ l/Test, blue line). Non-fluorescently stained cells were used as blank control (red line).



Flow cytometry: 1×10^6 Human PBMC (untreated, left) and Human PBMC (treated with 5 μ g/mL PHA for 72 hours, right) were intracellularly-stained with ABflo® 450 Rabbit anti-Human cCD3 mAb (A27836, 5 μ l/Test) and ABflo® 700 Rabbit anti-Human/Monkey Ki67 mAb (A26737, 5 μ l/Test). Cells in the lymphocyte gate were used for analysis.