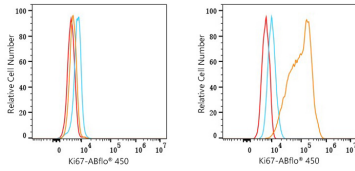
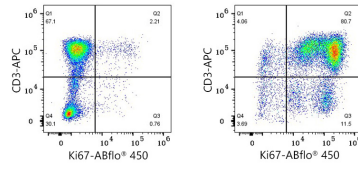


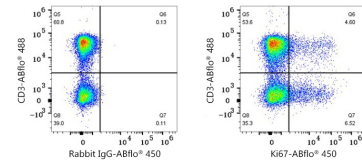
Validation Data



Flow cytometry: 1×10^6 knockout (KO) HeLa cells (negative control, left) and HeLa cells (right) were intracellularly-stained with ABflo® 450 Rabbit anti-Human/Monkey Ki67 mAb (A26735, 5 μ l/Test, orange line) or ABflo® 450 Rabbit IgG isotype control (A27451, 5 μ l/Test, blue line). Non-fluorescently stained cells were used as blank control (red line).



Flow cytometry: 1×10^6 Human PBMC (untreated, left) and Human PBMC (treated with 5 μ g/mL PHA for 72 hours, right) were surface-stained with APC Rabbit anti-Human/Monkey CD3 mAb (A27111, 5 μ l/Test) and then intracellularly-stained with ABflo® 450 Rabbit anti-Human/Monkey Ki67 mAb (A26735, 5 μ l/Test). Cells in the lymphocyte gate were used for analysis.



Flow cytometry: 1×10^6 Cynomolgus peripheral blood mononuclear cells were surface-stained with ABflo® 488 Rabbit anti-Human/Monkey CD3 mAb (A26283, 5 μ l/Test) and then intracellularly-stained with ABflo® 450 Rabbit IgG isotype control (A27451, 5 μ l/Test, left) or ABflo® 450 Rabbit anti-Human/Monkey Ki67 mAb (A26735, 5 μ l/Test, right). Cells in the lymphocyte gate were used for analysis.