

ABflo® 488 Rabbit anti-Human CD52 mAb

Catalog No.: A26721

Basic Information

Observed MW

Calculated MW

7kDa

Category

Primary antibody

Applications

FC

Cross-Reactivity

Human

CloneNo number

ARC69476

Conjugate

ABflo® 488. Ex:491nm. Em:516nm.

Background

Involved in positive regulation of cytosolic calcium ion concentration. Predicted to be located in extracellular region and plasma membrane. Predicted to be intrinsic component of plasma membrane. Predicted to be active in sperm midpiece.

Recommended Dilutions

FC 5 µl per 10⁶ cells in
100 µl volume

Immunogen Information

Gene ID

1043

Swiss Prot

P31358

Immunogen

Synthetic peptide. This information is considered to be commercially sensitive.

Synonyms

HE5; CDW52; EDDM5

Contact

☎ | 400-999-6126

✉ | cn.market@abclonal.com.cn

🌐 | www.abclonal.com.cn

Product Information

Source

Rabbit

Isotype

IgG

Purification

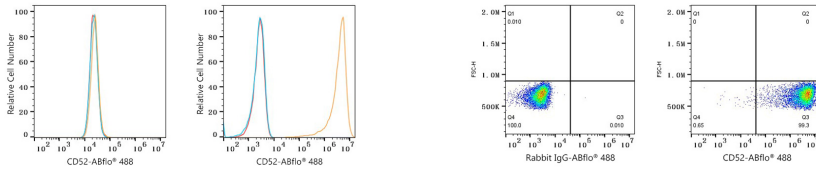
Affinity purification

Storage

Store at 2-8°C. Avoid freeze.

Buffer: PBS with 0.09% Sodium azide, 0.2% BSA, pH7.3.

Validation Data



Flow cytometry: 1×10^6 HAP1 cells (negative control, left) and Human PBMC (right) were surface-stained with ABflo® 488 Rabbit anti-Human CD52 mAb (A26721, 5 μ l/Test, orange line) or ABflo® 488 Rabbit IgG isotype control (A22069, 5 μ l/Test, blue line). Non-fluorescently stained cells were used as blank control (red line).

Flow cytometry: 1×10^6 Human PBMC were surface-stained with ABflo® 488 Rabbit IgG isotype control (A22069, 5 μ l/Test, left) or ABflo® 488 Rabbit anti-Human CD52 mAb (A26721, 5 μ l/Test, right).