

Integrin alpha-6/ITGA6 Rabbit mAb

Catalog No.: A26707 **Recombinant**

Basic Information

Observed MW

127kDa

Calculated MW

127kDa

Category

Primary antibody

Applications

WB,IF-P,IHC-P,ELISA

Cross-Reactivity

Human, Mouse, Rat

CloneNo number

ARC69398

Background

The gene encodes a member of the integrin alpha chain family of proteins. Integrins are heterodimeric integral membrane proteins composed of an alpha chain and a beta chain that function in cell surface adhesion and signaling. The encoded preproprotein is proteolytically processed to generate light and heavy chains that comprise the alpha 6 subunit. This subunit may associate with a beta 1 or beta 4 subunit to form an integrin that interacts with extracellular matrix proteins including members of the laminin family. The alpha 6 beta 4 integrin may promote tumorigenesis, while the alpha 6 beta 1 integrin may negatively regulate erbB2/HER2 signaling. Alternative splicing results in multiple transcript variants.

Recommended Dilutions

WB 1:2500 - 1:10000

IF-P 1:200 - 1:800

IHC-P 1:200 - 1:800

ELISA Recommended starting concentration is 1 µg/mL. Please optimize the concentration based on your specific assay requirements.

Immunogen Information

Gene ID

3655

Swiss Prot

P23229

Immunogen

Recombinant protein (or fragment). This information is considered to be commercially sensitive.

Synonyms

JEB6; CD49f; VLA-6; ITGA6A; ITGA6B

Contact

☎ | 400-999-6126

✉ | cn.market@abclonal.com.cn

🌐 | www.abclonal.com.cn

Product Information

Source

Rabbit

Isotype

IgG

Purification

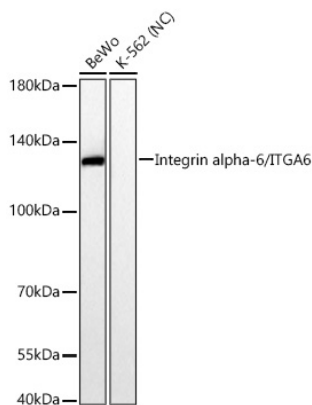
Affinity purification

Storage

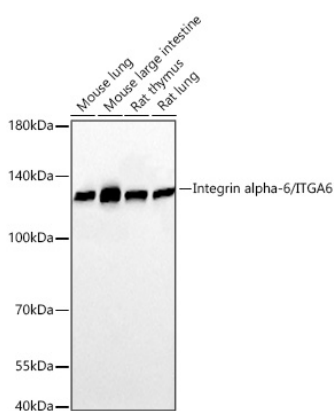
Store at -20°C. Avoid freeze / thaw cycles.

Buffer: PBS with 0.09% Sodium azide, 0.05% BSA, 50% glycerol, pH7.3.

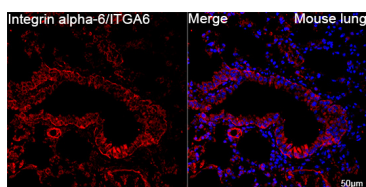
Validation Data



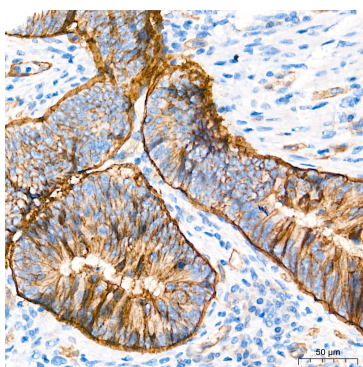
Western blot analysis of various lysates using Integrin alpha-6/ITGA6 Rabbit mAb (A26707) at 1:5000 dilution incubated overnight at 4°C.
 Secondary antibody: HRP-conjugated Goat anti-Rabbit IgG (H+L) (AS014) at 1:10000 dilution.
 Lysates/proteins: 25 µg per lane.
 Blocking buffer: 3% nonfat dry milk in TBST.
 Detection: ECL Basic Kit (RM00020).
 Negative control (NC): K-562
 Exposure time: 30s.



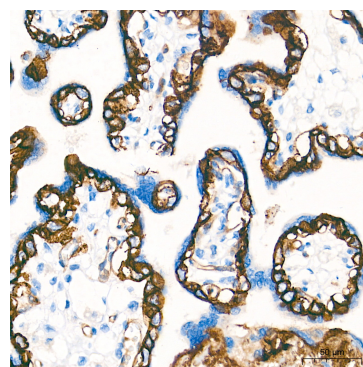
Western blot analysis of various lysates using Integrin alpha-6/ITGA6 Rabbit mAb (A26707) at 1:5000 dilution incubated overnight at 4°C.
 Secondary antibody: HRP-conjugated Goat anti-Rabbit IgG (H+L) (AS014) at 1:10000 dilution.
 Lysates/proteins: 25 µg per lane.
 Blocking buffer: 3% nonfat dry milk in TBST.
 Detection: ECL Basic Kit (RM00020).
 Exposure time: 60s.



Confocal imaging of paraffin-embedded Mouse lung tissue using Integrin alpha-6/ITGA6 Rabbit mAb (A26707, dilution 1:200) followed by a further incubation with Cy3 Goat Anti-Rabbit IgG (H+L) (AS007, dilution 1:500) (Red). DAPI was used for nuclear staining (Blue). High pressure antigen retrieval performed with 0.01M Citrate Buffer (pH 6.0) prior to IF staining. Objective: 40x.

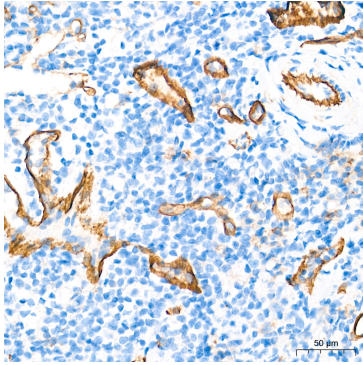


Immunohistochemistry analysis of paraffin-embedded Human colon carcinoma tissue using Integrin alpha-6/ITGA6 Rabbit mAb (A26707) at a dilution of 1:200 (40x lens). High pressure antigen retrieval performed with 0.01M Tris-EDTA Buffer (pH 9.0) prior to IHC staining.

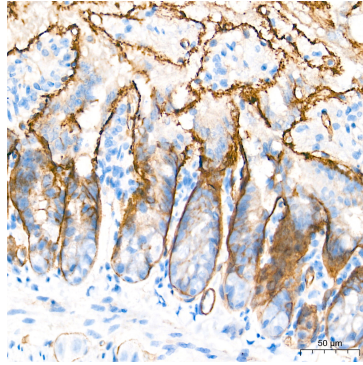


Immunohistochemistry analysis of paraffin-embedded Human placenta tissue using Integrin alpha-6/ITGA6 Rabbit mAb (A26707) at a dilution of 1:200 (40x lens). High pressure antigen retrieval performed with 0.01M Tris-EDTA Buffer (pH 9.0) prior to IHC staining.

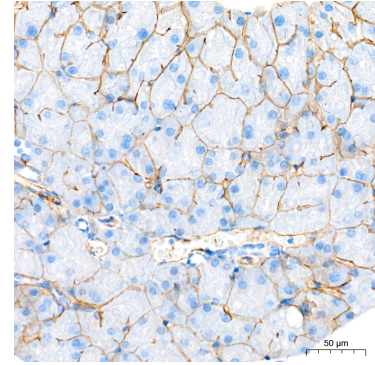
Validation Data



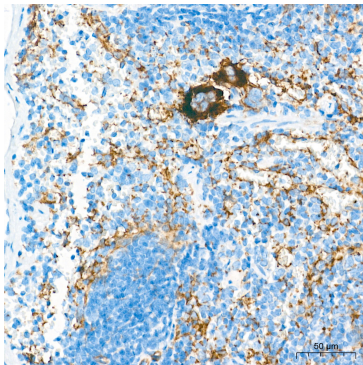
Immunohistochemistry analysis of paraffin-embedded Human tonsil tissue using Integrin alpha-6/ITGA6 Rabbit mAb (A26707) at a dilution of 1:200 (40x lens). High pressure antigen retrieval performed with 0.01M Tris-EDTA Buffer (pH 9.0) prior to IHC staining.



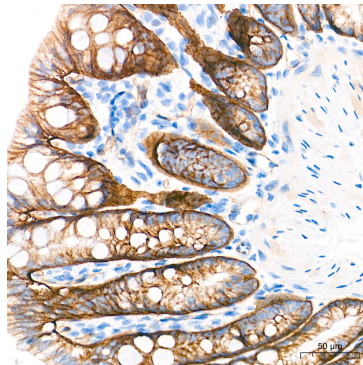
Immunohistochemistry analysis of paraffin-embedded Mouse colon tissue using Integrin alpha-6/ITGA6 Rabbit mAb (A26707) at a dilution of 1:200 (40x lens). High pressure antigen retrieval performed with 0.01M Tris-EDTA Buffer (pH 9.0) prior to IHC staining.



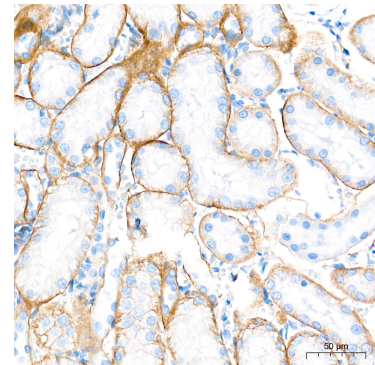
Immunohistochemistry analysis of paraffin-embedded Mouse pancreas tissue using Integrin alpha-6/ITGA6 Rabbit mAb (A26707) at a dilution of 1:200 (40x lens). High pressure antigen retrieval performed with 0.01M Tris-EDTA Buffer (pH 9.0) prior to IHC staining.



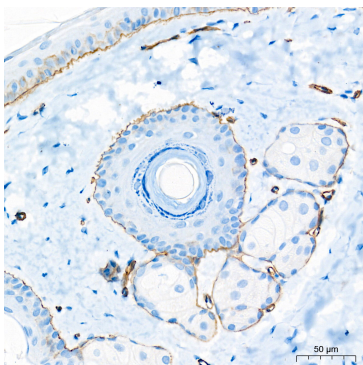
Immunohistochemistry analysis of paraffin-embedded Mouse spleen tissue using Integrin alpha-6/ITGA6 Rabbit mAb (A26707) at a dilution of 1:200 (40x lens). High pressure antigen retrieval performed with 0.01M Tris-EDTA Buffer (pH 9.0) prior to IHC staining.



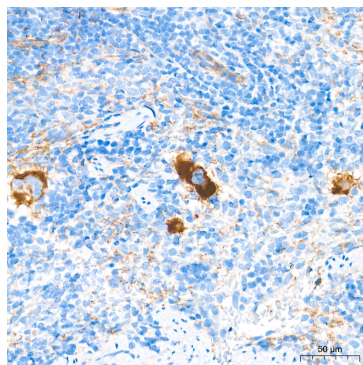
Immunohistochemistry analysis of paraffin-embedded Rat colon tissue using Integrin alpha-6/ITGA6 Rabbit mAb (A26707) at a dilution of 1:200 (40x lens). High pressure antigen retrieval performed with 0.01M Tris-EDTA Buffer (pH 9.0) prior to IHC staining.



Immunohistochemistry analysis of paraffin-embedded Rat kidney tissue using Integrin alpha-6/ITGA6 Rabbit mAb (A26707) at a dilution of 1:200 (40x lens). High pressure antigen retrieval performed with 0.01M Tris-EDTA Buffer (pH 9.0) prior to IHC staining.



Immunohistochemistry analysis of paraffin-embedded Rat skin tissue using Integrin alpha-6/ITGA6 Rabbit mAb (A26707) at a dilution of 1:200 (40x lens). High pressure antigen retrieval performed with 0.01M Tris-EDTA Buffer (pH 9.0) prior to IHC staining.



Immunohistochemistry analysis of paraffin-embedded Rat spleen tissue using Integrin alpha-6/ITGA6 Rabbit mAb (A26707) at a dilution of 1:200 (40x lens). High pressure antigen retrieval performed with 0.01M Tris-EDTA Buffer (pH 9.0) prior to IHC staining.