

# p73 Rabbit mAb

Catalog No.: A2670

Recombinant

1 Publications

## Basic Information

### Observed MW

80kDa

### Calculated MW

70kDa

### Category

Primary antibody

### Applications

WB,IHC-P,ELISA

### Cross-Reactivity

Human, Mouse, Rat

### CloneNo number

ARC2628

## Background

This gene encodes a member of the p53 family of transcription factors involved in cellular responses to stress and development. It maps to a region on chromosome 1p36 that is frequently deleted in neuroblastoma and other tumors, and thought to contain multiple tumor suppressor genes. The demonstration that this gene is monoallelically expressed (likely from the maternal allele), supports the notion that it is a candidate gene for neuroblastoma. Many transcript variants resulting from alternative splicing and/or use of alternate promoters have been found for this gene, but the biological validity and the full-length nature of some variants have not been determined.

## Recommended Dilutions

|           |                |
|-----------|----------------|
| <b>WB</b> | 1:500 - 1:1000 |
|-----------|----------------|

|              |              |
|--------------|--------------|
| <b>IHC-P</b> | 1:50 - 1:200 |
|--------------|--------------|

|              |   |
|--------------|---|
| <b>ELISA</b> | Recommended starting concentration is 1 µg/mL. Please optimize the concentration based on your specific assay requirements. |
|--------------|---|

## Immunogen Information

### Gene ID

7161

### Swiss Prot

O15350

### Immunogen

Synthetic peptide. This information is considered to be commercially sensitive.

### Synonyms

P73; CILD47; p73

## Contact

|  |  |              |
|--|--|--------------|
|  |  | 400-999-6126 |
|--|--|--------------|

|  |  |                           |
|--|--|---------------------------|
|  |  | cn.market@abclonal.com.cn |
|--|--|---------------------------|

|  |  |                     |
|--|--|---------------------|
|  |  | www.abclonal.com.cn |
|--|--|---------------------|

## Product Information

### Source

Rabbit

### Isotype

IgG

### Purification

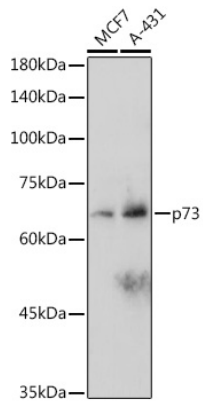
Affinity purification

### Storage

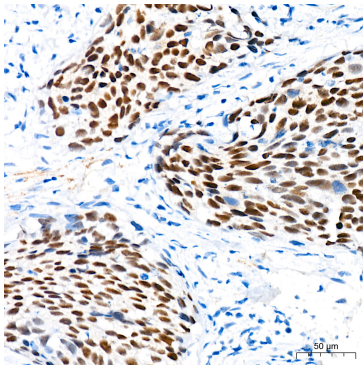
Store at -20°C. Avoid freeze / thaw cycles.

Buffer: PBS containing 50% glycerol and 0.05% BSA, preserved with proclin300 or sodium azide (as specified on the Certificate of Analysis), pH 7.3.

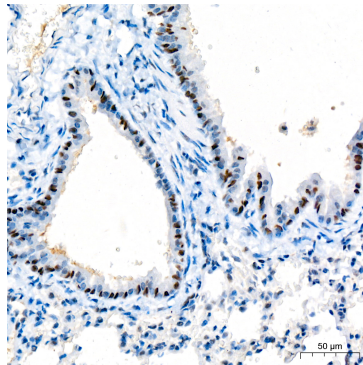
## Validation Data



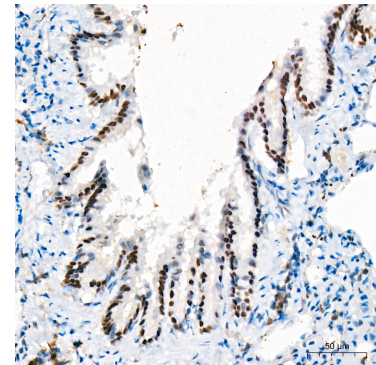
Western blot analysis of various lysates using p73 Rabbit mAb (A2670) at 1:1000 dilution.  
Secondary antibody: HRP-conjugated Goat anti-Rabbit IgG (H+L) (AS014) at 1:10000 dilution.  
Lysates/proteins: 25µg per lane.  
Blocking buffer: 3% nonfat dry milk in TBST.  
Detection: ECL Basic Kit (RM00020).  
Exposure time: 180s.



Immunohistochemistry analysis of paraffin-embedded Human cervix cancer tissue using p73 Rabbit mAb (A2670) at a dilution of 1:200 (40x lens). High pressure antigen retrieval was performed with 0.01 M citrate buffer (pH 6.0) prior to IHC staining.



Immunohistochemistry analysis of paraffin-embedded Mouse lung tissue using p73 Rabbit mAb (A2670) at a dilution of 1:200 (40x lens). High pressure antigen retrieval was performed with 0.01 M citrate buffer (pH 6.0) prior to IHC staining.



Immunohistochemistry analysis of paraffin-embedded Rat lung tissue using p73 Rabbit mAb (A2670) at a dilution of 1:200 (40x lens). High pressure antigen retrieval was performed with 0.01 M citrate buffer (pH 6.0) prior to IHC staining.