

# PE Rabbit anti-Human NT5E/CD73 mAb

Catalog No.: A26651

## Basic Information

### Observed MW

### Calculated MW

63kDa

### Category

Primary antibody

### Applications

FC

### Cross-Reactivity

Human

### CloneNo number

ARC67095

### Conjugate

PE. Ex:565nm. Em:574nm.

## Background

The protein encoded by this gene is a plasma membrane protein that catalyzes the conversion of extracellular nucleotides to membrane-permeable nucleosides. The encoded protein is used as a determinant of lymphocyte differentiation. Defects in this gene can lead to the calcification of joints and arteries. Two transcript variants encoding different isoforms have been found for this gene.

## Recommended Dilutions

**FC** 5 µl per 10<sup>6</sup> cells in  
100 µl volume

## Immunogen Information

### Gene ID

4907

### Swiss Prot

P21589

### Immunogen

Recombinant protein (or fragment). This information is considered to be commercially sensitive.

### Synonyms

NT; eN; NT5; NTE; eNT; CD73; E5NT; CALJA

## Contact

 | 400-999-6126

 | [cn.market@abclonal.com.cn](mailto:cn.market@abclonal.com.cn)

 | [www.abclonal.com.cn](http://www.abclonal.com.cn)

## Product Information

### Source

Rabbit

### Isotype

IgG

### Purification

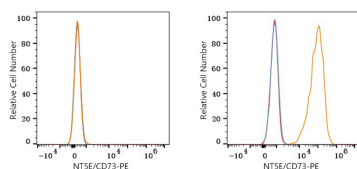
Affinity purification

### Storage

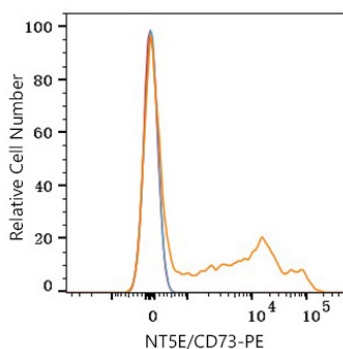
Store at 2-8°C. Avoid freeze.

Buffer: PBS with 0.09% Sodium azide, 0.2% BSA, pH7.3.

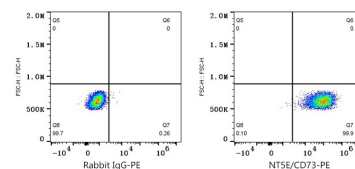
## Validation Data



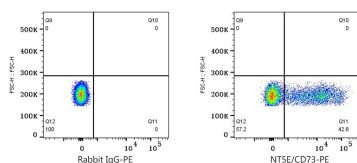
Flow cytometry:  $1 \times 10^6$  MOLT-4 cells (negative control, left) and A-431 cells (right) were surface-stained with PE Rabbit anti-Human NTSE/CD73 mAb (A26651,5  $\mu$ l/Test, orange line) or PE Rabbit IgG isotype control (A24172,5  $\mu$ l/Test, blue line). Non-fluorescently stained cells were used as blank control (red line).



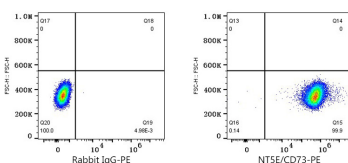
Flow cytometry:  $1 \times 10^6$  Human PBMC were surface-stained with PE Rabbit anti-Human NTSE/CD73 mAb (A26651,5  $\mu$ l/Test, orange line) or PE Rabbit IgG isotype control (A24172,5  $\mu$ l/Test, blue line). Non-fluorescently stained cells were used as blank control (red line). Cells in the lymphocytes gate were used for analysis.



Flow cytometry:  $1 \times 10^6$  A-431 cells were surface-stained with PE Rabbit IgG isotype control (A24172,5  $\mu$ l/Test, left) or PE Rabbit anti-Human NTSE/CD73 mAb (A26651,5  $\mu$ l/Test, right).



Flow cytometry:  $1 \times 10^6$  Human PBMC were surface-stained with PE Rabbit IgG isotype control (A24172,5  $\mu$ l/Test, left) or PE Rabbit anti-Human NTSE/CD73 mAb (A26651,5  $\mu$ l/Test, right). Cells in the lymphocytes gate were used for analysis.



Flow cytometry:  $1 \times 10^6$  Human mesenchymal stem cells were surface-stained with PE Rabbit IgG isotype control (A24172,5  $\mu$ l/Test, left) or PE Rabbit anti-Human NTSE/CD73 mAb (A26651,5  $\mu$ l/Test, right).