

# ABflo® 647 Rabbit anti-Human CD218a/IL-18R $\alpha$ mAb

Catalog No.: A26646

## Basic Information

### Observed MW

### Calculated MW

62kDa

### Category

Primary antibody

### Applications

FC

### Cross-Reactivity

Human

### CloneNo number

ARC70055

### Conjugate

ABflo® 647. Ex:648nm. Em:664nm.

## Recommended Dilutions

FC 5  $\mu$ l per  $10^6$  cells in  
100  $\mu$ l volume

## Background

The protein encoded by this gene is a cytokine receptor that belongs to the interleukin 1 receptor family. This receptor specifically binds interleukin 18 (IL18), and is essential for IL18 mediated signal transduction. IFN-alpha and IL12 are reported to induce the expression of this receptor in NK and T cells. This gene along with four other members of the interleukin 1 receptor family, including IL1R2, IL1R1, ILRL2 (IL-1Rrp2), and IL1RL1 (T1/ST2), form a gene cluster on chromosome 2q. Alternatively spliced transcript variants encoding different isoforms have been found for this gene.

## Immunogen Information

### Gene ID

8809

### Swiss Prot

Q13478

### Immunogen

Recombinant protein (or fragment). This information is considered to be commercially sensitive.

### Synonyms

CD218a; IL18RA; IL1RRP; CDw218a; IL-1Rrp; IL-18Ralpha; IL18Ralpha2; IL-18R-alpha

## Contact

 | 400-999-6126

 | [cn.market@abclonal.com.cn](mailto:cn.market@abclonal.com.cn)

 | [www.abclonal.com.cn](http://www.abclonal.com.cn)

## Product Information

### Source

Rabbit

### Isotype

IgG

### Purification

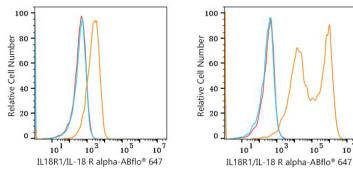
Affinity purification

### Storage

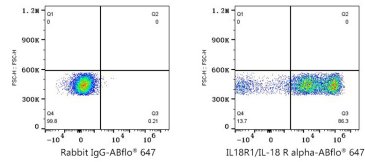
Store at 2-8°C. Avoid freeze.

Buffer: PBS with 0.09% Sodium azide, 0.2% BSA, pH7.3.

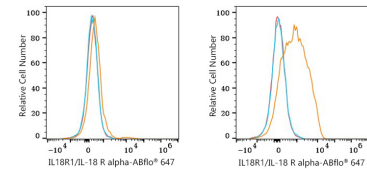
## Validation Data



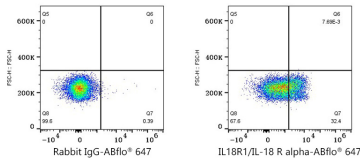
Flow cytometry:  $1 \times 10^6$  293T cells (negative control, left) and 293T (Transfection, right) cells were surface-stained with ABflo® 647 Rabbit anti-Human IL18R1/IL-18 R alpha mAb (A26646,5  $\mu\text{l}/\text{Test}$ , orange line) or ABflo® 647 Rabbit IgG isotype control (A22070,5  $\mu\text{l}/\text{Test}$ , blue line). Non-fluorescently stained cells were used as blank control (red line).



Flow cytometry:  $1 \times 10^6$  293T (Transfection) cells were surface-stained with ABflo® 647 Rabbit IgG isotype control (A22070,5  $\mu\text{l}/\text{Test}$ , left) or ABflo® 647 Rabbit anti-Human IL18R1/IL-18 R alpha mAb (A26646,5  $\mu\text{l}/\text{Test}$ , right).



Flow cytometry:  $1 \times 10^6$  THP-1 cells (negative control, left) and Human PBMC (right) were surface-stained with ABflo® 647 Rabbit anti-Human IL18R1/IL-18 R alpha mAb (A26646,5  $\mu\text{l}/\text{Test}$ , orange line) or ABflo® 647 Rabbit IgG isotype control (A22070,5  $\mu\text{l}/\text{Test}$ , blue line). Non-fluorescently stained cells were used as blank control (red line).



Flow cytometry:  $1 \times 10^6$  Human PBMC were surface-stained with ABflo® 647 Rabbit IgG isotype control (A22070,5  $\mu\text{l}/\text{Test}$ , left) or ABflo® 647 Rabbit anti-Human IL18R1/IL-18 R alpha mAb (A26646,5  $\mu\text{l}/\text{Test}$ , right). Cells in the lymphocytes gate were used for analysis.