

ABflo® 700 Rabbit anti-Human CD170/Siglec-5 mAb

Catalog No.: A26615

Basic Information

Observed MW

Calculated MW

61kDa

Category

Primary antibody

Applications

FC

Cross-Reactivity

Human

CloneNo number

ARC60966

Conjugate

ABflo® 700. Ex:690nm. Em:713nm.

Recommended Dilutions

FC 5 µl per 10⁶ cells in
100 µl volume

Background

This gene encodes a member of the sialic acid-binding immunoglobulin-like lectin (Siglec) family. These cell surface lectins are characterized by structural motifs in the immunoglobulin (Ig)-like domains and sialic acid recognition sites in the first Ig V set domain. The encoded protein is a member of the CD33-related subset of Siglecs and inhibits the activation of several cell types including monocytes, macrophages and neutrophils. Binding of group B Streptococcus (GBS) to the encoded protein plays a role in GBS immune evasion.

Immunogen Information

Gene ID

8778

Swiss Prot

O15389

Immunogen

Recombinant protein (or fragment). This information is considered to be commercially sensitive.

Synonyms

CD170; OBBP2; CD33L2; OB-BP2; SIGLEC-5

Contact

☎ | 400-999-6126

✉ | cn.market@abclonal.com.cn

🌐 | www.abclonal.com.cn

Product Information

Source

Rabbit

Isotype

IgG

Purification

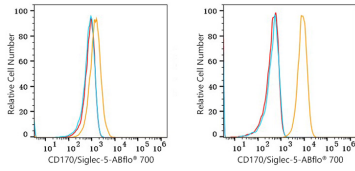
Affinity purification

Storage

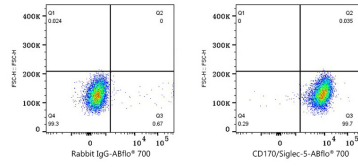
Store at 2-8°C. Avoid freeze.

Buffer: PBS with 0.09% Sodium azide, 0.2% BSA, pH7.3.

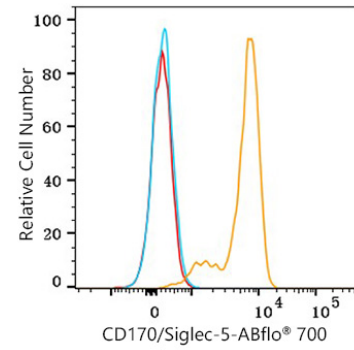
Validation Data



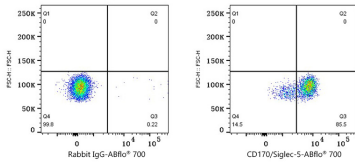
Flow cytometry: 1×10^6 K-562 cells (negative control, left) and U-937 (right) were surface-stained with ABflo® 700 Rabbit anti-Human CD170/Siglec-5 mAb (A26615, 5 μ l/Test, orange line) or ABflo® 700 Rabbit IgG isotype control (A25976, 5 μ l/Test, blue line). Non-fluorescently stained cells were used as blank control (red line).



Flow cytometry: 1×10^6 U-937 were surface-stained with ABflo® 700 Rabbit IgG isotype control (A25976, 5 μ l/Test, left) or ABflo® 700 Rabbit anti-Human CD170/Siglec-5 mAb (A26615, 5 μ l/Test, right).



Flow cytometry: 1×10^6 Human PBMC were surface-stained with ABflo® 700 Rabbit anti-Human CD170/Siglec-5 mAb (A26615, 5 μ l/Test, orange line) or ABflo® 700 Rabbit IgG isotype control (A25976, 5 μ l/Test, blue line). Non-fluorescently stained cells were used as blank control (red line). Cells in the monocyte gate were used for analysis.



Flow cytometry: 1×10^6 Human PBMC were surface-stained with ABflo® 700 Rabbit IgG isotype control (A25976, 5 μ l/Test, left) or ABflo® 700 Rabbit anti-Human CD170/Siglec-5 mAb (A26615, 5 μ l/Test, right). Cells in the monocyte gate were used for analysis.