

APC/Cyanine7 Rabbit anti-Human/Monkey CD45 mAb

Catalog No.: A26611

Basic Information

Observed MW

Calculated MW

138kDa

Category

Primary antibody

Applications

FC

Cross-Reactivity

Human, Cynomolgus

CloneNo number

ARC5024

Conjugate

APC-Cy7. Ex:651nm. Em:779nm.

Recommended Dilutions

FC 5 μ l per 10^6 cells in
100 μ l volume

Background

The protein encoded by this gene is a member of the protein tyrosine phosphatase (PTP) family. PTPs are known to be signaling molecules that regulate a variety of cellular processes including cell growth, differentiation, mitosis, and oncogenic transformation. This PTP contains an extracellular domain, a single transmembrane segment and two tandem intracytoplasmic catalytic domains, and thus is classified as a receptor type PTP. This PTP has been shown to be an essential regulator of T- and B-cell antigen receptor signaling. It functions through either direct interaction with components of the antigen receptor complexes, or by activating various Src family kinases required for the antigen receptor signaling. This PTP also suppresses JAK kinases, and thus functions as a regulator of cytokine receptor signaling. Alternatively spliced transcripts variants of this gene, which encode distinct isoforms, have been reported.

Immunogen Information

Gene ID

5788

Swiss Prot

P08575-8

Immunogen

Recombinant protein (or fragment). This information is considered to be commercially sensitive.

Synonyms

LCA; LY5; B220; CD45; L-CA; T200; CD45R; GP180; IMD105

Contact

☎ | 400-999-6126

✉ | cn.market@abclonal.com.cn

🌐 | www.abclonal.com.cn

Product Information

Source

Rabbit

Isotype

IgG

Purification

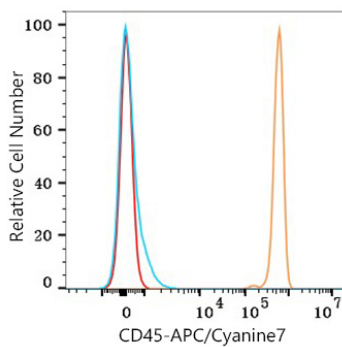
Affinity purification

Storage

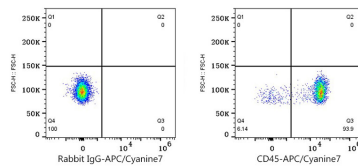
Store at 2-8°C. Avoid freeze.

Buffer: PBS with 0.09% Sodium azide, 0.2% BSA, pH7.3.

Validation Data



Flow cytometry: 1×10^6 Human PBMC were surface-stained with APC/Cyanine7 Rabbit anti-Human/Monkey CD45 mAb (A26611, 5 μ l/Test, orange line) or APC/Cyanine7 Rabbit IgG isotype control (5 μ l/Test, blue line). Non-fluorescently stained cells were used as blank control (red line). Cells in the lymphocyte gate were used for analysis.



Flow cytometry: 1×10^6 Cynomolgus peripheral blood mononuclear cells were surface-stained with APC/Cyanine7 Rabbit IgG isotype control (5 μ l/Test, left) or APC/Cyanine7 Rabbit anti-Human/Monkey CD45 mAb (A26611, 5 μ l/Test, right). Cells in the lymphocyte gate were used for analysis.