

# PE Rabbit anti-Human/Mouse PDGFR $\alpha$ /CD140a mAb

Catalog No.: A26602

## Basic Information

### Observed MW

**Calculated MW**  
123kDa

**Category**  
Primary antibody

**Applications**  
FC

**Cross-Reactivity**  
Human, Mouse

**CloneNo number**  
ARC56217

**Conjugate**  
PE. Ex:565nm. Em:574nm.

## Background

This gene encodes a cell surface tyrosine kinase receptor for members of the platelet-derived growth factor family. These growth factors are mitogens for cells of mesenchymal origin. The identity of the growth factor bound to a receptor monomer determines whether the functional receptor is a homodimer or a heterodimer, composed of both platelet-derived growth factor receptor alpha and beta polypeptides. Studies suggest that this gene plays a role in organ development, wound healing, and tumor progression. Mutations in this gene have been associated with idiopathic hypereosinophilic syndrome, somatic and familial gastrointestinal stromal tumors, and a variety of other cancers.

## Recommended Dilutions

**FC** 5  $\mu$ l per  $10^6$  cells in  
100  $\mu$ l volume

## Immunogen Information

<b>Gene ID</b> 5156	<b>Swiss Prot</b> P16234
------------------------	-----------------------------

### Immunogen

Recombinant protein (or fragment). This information is considered to be commercially sensitive.

### Synonyms

CD140A; PDGFR2; PDGFR-2

## Contact

		400-999-6126
		<a href="mailto:cn.market@abclonal.com.cn">cn.market@abclonal.com.cn</a>
		<a href="http://www.abclonal.com.cn">www.abclonal.com.cn</a>

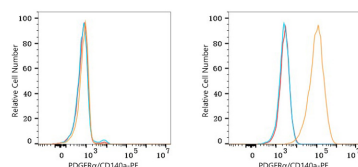
## Product Information

<b>Source</b> Rabbit	<b>Isotype</b> IgG	<b>Purification</b> Affinity purification
-------------------------	-----------------------	--

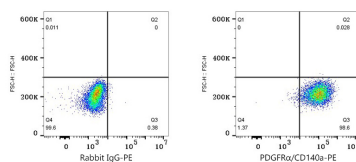
### Storage

Store at 2-8°C. Avoid freeze.  
Buffer: PBS with 0.09% Sodium azide, 0.2% BSA, pH7.3.

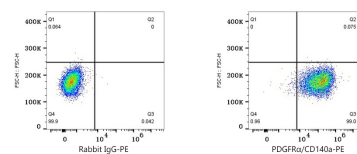
## Validation Data



Flow cytometry:  $1 \times 10^6$  HeLa cells (negative control, left) and U-138MG cells (right) were surface-stained with PE Rabbit anti-Human/Mouse PDGFR $\alpha$ /CD140a mAb (A26602, 5  $\mu$ l/Test, orange line) or PE Rabbit IgG isotype control (A24172, 5  $\mu$ l/Test, blue line). Non-fluorescently stained cells were used as blank control (red line).



Flow cytometry:  $1 \times 10^6$  U-138MG cells were surface-stained with PE Rabbit IgG isotype control (A24172, 5  $\mu$ l/Test, left) or PE Rabbit anti-Human/Mouse PDGFR $\alpha$ /CD140a mAb (A26602, 5  $\mu$ l/Test, right).



Flow cytometry:  $1 \times 10^6$  NIH/3T3 cells were surface-stained with PE Rabbit IgG isotype control (A24172, 5  $\mu$ l/Test, left) or PE Rabbit anti-Human/Mouse PDGFR $\alpha$ /CD140a mAb (A26602, 5  $\mu$ l/Test, right).