

CD304/Neuropilin-1 Rabbit PolymAb®

Catalog No.: A26530PM

Basic Information

Observed MW

120-140kDa

Calculated MW

103kDa

Category

Primary antibody

Applications

WB,IF/ICC,IHC-P,ELISA

Cross-Reactivity

Human, Mouse, Rat

Background

Enables protein kinase binding activity; transmembrane signaling receptor activity; and vascular endothelial growth factor binding activity. Involved in several processes, including nervous system development; regulation of signal transduction; and vasculature development. Acts upstream of or within several processes, including morphogenesis of a branching epithelium; nervous system development; and toxin transport. Located in several cellular components, including endosome; focal adhesion; and neurofilament. Is integral component of postsynaptic membrane. Is expressed in several structures, including cardiovascular system; jaw; lung; nervous system; and sensory organ. Used to study retinal vein occlusion. Human ortholog(s) of this gene implicated in lung non-small cell carcinoma. Orthologous to human NRP1 (neuropilin 1).

Recommended Dilutions

WB 1:1000 - 1:2000

IF/ICC 1:200 - 1:800

IHC-P 1:1500 - 1:6000

ELISA Recommended starting concentration is 1 µg/mL. Please optimize the concentration based on your specific assay requirements.

Immunogen Information

Gene ID

18186

Swiss Prot

P97333

Immunogen

Recombinant protein (or fragment). This information is considered to be commercially sensitive.

Synonyms

Nrp; NP-1; Npn1; NPN-1; C530029I03

Contact

☎ | 400-999-6126

✉ | cn.market@abclonal.com.cn

🌐 | www.abclonal.com.cn

Product Information

Source

Rabbit

Isotype

IgG

Purification

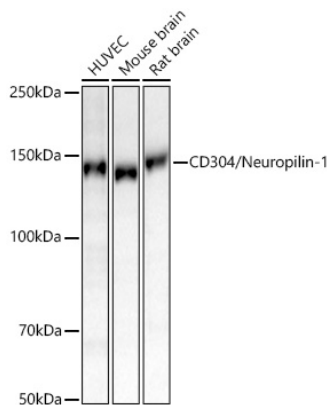
Affinity purification

Storage

Store at -20°C. Avoid freeze / thaw cycles.

Buffer: PBS with 0.09% Sodium azide, 0.05% BSA, 50% glycerol, pH7.3.

Validation Data



Western blot analysis of various lysates using CD304/Neuropilin-1 Rabbit PolymAb® (A26530PM) at 1:1000 dilution incubated overnight at 4°C.

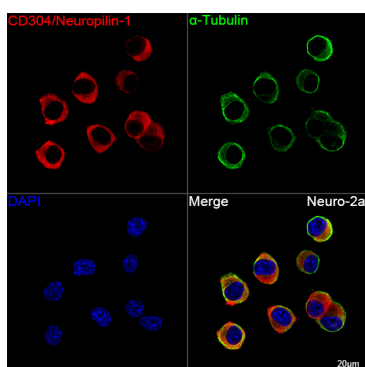
Secondary antibody: HRP-conjugated Goat anti-Rabbit IgG (H+L) (AS014) at 1:10000 dilution.

Lysates/proteins: 25 µg per lane.

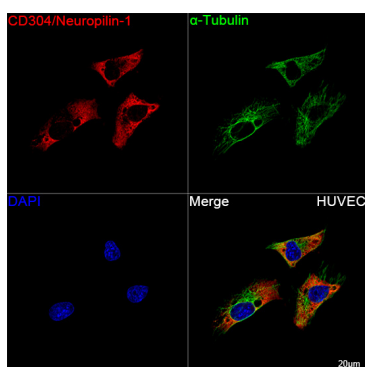
Blocking buffer: 3% nonfat dry milk in TBST.

Detection: ECL Basic Kit (RM00020).

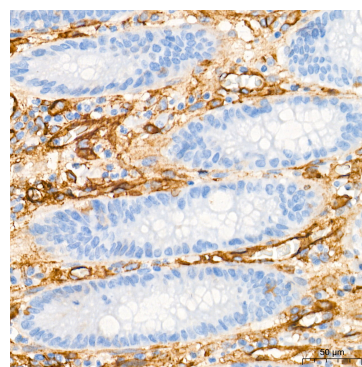
Exposure time: 90s.



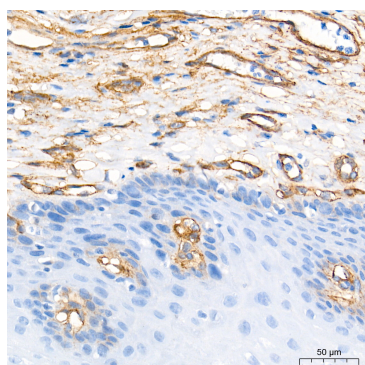
Confocal imaging of Neuro-2a cells using CD304/Neuropilin-1 Rabbit PolymAb® (A26530PM, dilution 1:200) followed by a further incubation with Cy3 Goat Anti-Rabbit IgG (H+L) (AS007, dilution 1:500) (Red). The cells were counterstained with α-Tubulin Mouse mAb (AC012, dilution 1:400) followed by incubation with ABflo® 488-conjugated Goat Anti-Mouse IgG (H+L) Ab (AS076, dilution 1:500) (Green). DAPI was used for nuclear staining (Blue). Objective: 100x.



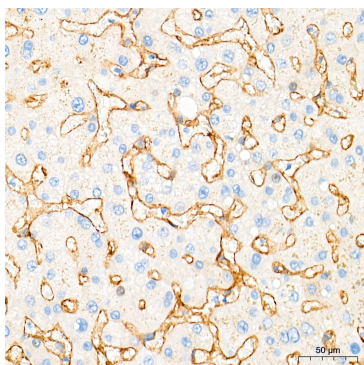
Confocal imaging of HUVEC cells using CD304/Neuropilin-1 Rabbit PolymAb® (A26530PM, dilution 1:200) followed by a further incubation with Cy3 Goat Anti-Rabbit IgG (H+L) (AS007, dilution 1:500) (Red). The cells were counterstained with α-Tubulin Mouse mAb (AC012, dilution 1:400) followed by incubation with ABflo® 488-conjugated Goat Anti-Mouse IgG (H+L) Ab (AS076, dilution 1:500) (Green). DAPI was used for nuclear staining (Blue). Objective: 100x.



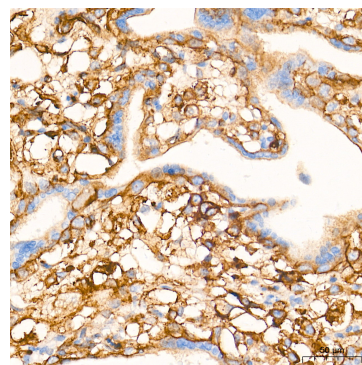
Immunohistochemistry analysis of paraffin-embedded Human colon tissue using CD304/Neuropilin-1 Rabbit PolymAb® (A26530PM) at a dilution of 1:6000 (40x lens). High pressure antigen retrieval performed with 0.01M Tris-EDTA Buffer (pH 9.0) prior to IHC staining.



Immunohistochemistry analysis of paraffin-embedded Human esophagus tissue using CD304/Neuropilin-1 Rabbit PolymAb® (A26530PM) at a dilution of 1:6000 (40x lens). High pressure antigen retrieval performed with 0.01M Tris-EDTA Buffer (pH 9.0) prior to IHC staining.

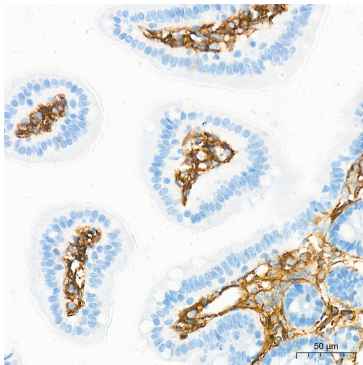


Immunohistochemistry analysis of paraffin-embedded Human liver tissue using CD304/Neuropilin-1 Rabbit PolymAb® (A26530PM) at a dilution of 1:6000 (40x lens). High pressure antigen retrieval performed with 0.01M Tris-EDTA Buffer (pH 9.0) prior to IHC staining.

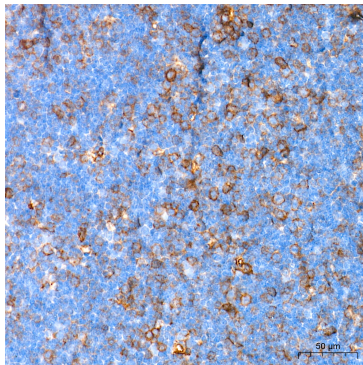


Immunohistochemistry analysis of paraffin-embedded Human placenta tissue using CD304/Neuropilin-1 Rabbit PolymAb® (A26530PM) at a dilution of 1:6000 (40x lens). High pressure antigen retrieval performed with 0.01M Tris-EDTA Buffer (pH 9.0) prior to IHC staining.

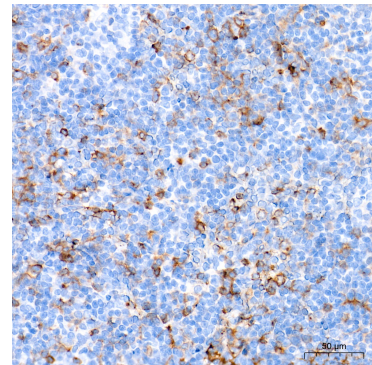
Validation Data



Immunohistochemistry analysis of paraffin-embedded Mouse intestine tissue using CD304/Neuropilin-1 Rabbit PolymAb® (A26530PM) at a dilution of 1:6000 (40x lens). High pressure antigen retrieval performed with 0.01M Tris-EDTA Buffer (pH 9.0) prior to IHC staining.



Immunohistochemistry analysis of paraffin-embedded Mouse thymus tissue using CD304/Neuropilin-1 Rabbit PolymAb® (A26530PM) at a dilution of 1:6000 (40x lens). High pressure antigen retrieval performed with 0.01M Tris-EDTA Buffer (pH 9.0) prior to IHC staining.



Immunohistochemistry analysis of paraffin-embedded Rat thymus tissue using CD304/Neuropilin-1 Rabbit PolymAb® (A26530PM) at a dilution of 1:6000 (40x lens). High pressure antigen retrieval performed with 0.01M Tris-EDTA Buffer (pH 9.0) prior to IHC staining.