

ABflo® 700 Rabbit anti-Human/Monkey CD4 mAb

Catalog No.: A26524

Basic Information

Observed MW

Calculated MW

51kDa

Category

Primary antibody

Applications

FC

Cross-Reactivity

Human, Cynomolgus

CloneNo number

ARC5142-01

Conjugate

ABflo® 700. Ex:690nm. Em:713nm.

Recommended Dilutions

FC 5 µl per 10⁶ cells in
100 µl volume

Background

This gene encodes the CD4 membrane glycoprotein of T lymphocytes. The CD4 antigen acts as a coreceptor with the T-cell receptor on the T lymphocyte to recognize antigens displayed by an antigen presenting cell in the context of class II MHC molecules. The CD4 antigen is also a primary receptor for entry of the human immunodeficiency virus through interactions with the HIV Env gp120 subunit. This gene is expressed not only in T lymphocytes, but also in B cells, macrophages, granulocytes, as well as in various regions of the brain. The protein functions to initiate or augment the early phase of T-cell activation, and may function as an important mediator of indirect neuronal damage in infectious and immune-mediated diseases of the central nervous system. Multiple alternatively spliced transcript variants encoding different isoforms have been identified in this gene.

Immunogen Information

Gene ID

Hu 920 Cyon 101864991

Swiss Prot

P01730

Immunogen

Recombinant protein (or fragment). This information is considered to be commercially sensitive.

Synonyms

T4; IMD79; Leu-3; OKT4D; CD4mut

Contact

☎ | 400-999-6126

✉ | cn.market@abclonal.com.cn

🌐 | www.abclonal.com.cn

Product Information

Source

Rabbit

Isotype

IgG

Purification

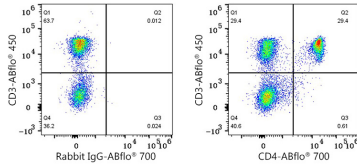
Affinity purification

Storage

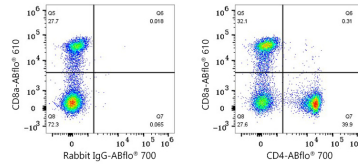
Store at 2-8°C. Avoid freeze.

Buffer: PBS with 0.09% Sodium azide, 0.2% BSA, pH7.3.

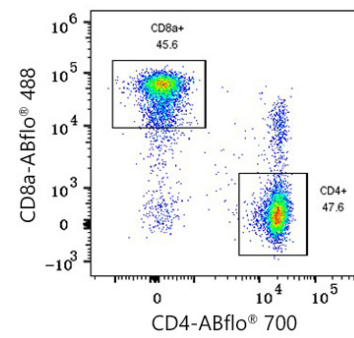
Validation Data



Flow cytometry: 1×10^6 Cynomolgus peripheral blood mononuclear cells were surface-stained with ABflo® 450 Rabbit anti-Human/Monkey CD3 mAb (A27177, 5 $\mu\text{l}/\text{Test}$) and ABflo® 700 Rabbit IgG isotype control (A25976, 5 $\mu\text{l}/\text{Test}$, left) or ABflo® 700 Rabbit anti-Human/Monkey CD4 mAb (A26524, 5 $\mu\text{l}/\text{Test}$, right). Cells in the lymphocyte gate were used for analysis.



Flow cytometry: 1×10^6 Human PBMC were surface-stained with ABflo® 610 Rabbit anti-Human/Monkey CD8a mAb (A25765, 5 $\mu\text{l}/\text{Test}$) and ABflo® 700 Rabbit IgG isotype control (A25976, 5 $\mu\text{l}/\text{Test}$, left) or ABflo® 700 Rabbit anti-Human/Monkey CD4 mAb (A26524, 5 $\mu\text{l}/\text{Test}$, right). Cells in the lymphocyte gate were used for analysis.



Flow cytometry: 1×10^6 Cynomolgus PBMC were surface-stained with PE Rabbit anti-Human/Monkey CD11b mAb (A28771, 5 $\mu\text{l}/\text{Test}$), ABflo® 450 Rabbit anti-Human/Monkey CD3 mAb (A27177, 5 $\mu\text{l}/\text{Test}$), ABflo® 488 Rabbit anti-Human/Monkey CD8a mAb (A23345, 5 $\mu\text{l}/\text{Test}$) and ABflo® 700 Rabbit anti-Human/Monkey CD4 mAb (A26524, 5 $\mu\text{l}/\text{Test}$). Cells in the CD11b-CD3+ gate were used for analysis.