

PE Rabbit anti-Human CD172a/SIRP α mAb

Catalog No.: A26521

Basic Information

Observed MW

Refer to figures

Calculated MW

55kDa

Category

Primary antibody

Applications

FC

Cross-Reactivity

Human

CloneNo number

ARC55236

Conjugate

PE. Ex:565nm. Em:574nm.

Recommended Dilutions

FC 5 μ l per 10^6 cells in
100 μ l volume

Background

The protein encoded by this gene is a member of the signal-regulatory-protein (SIRP) family, and also belongs to the immunoglobulin superfamily. SIRP family members are receptor-type transmembrane glycoproteins known to be involved in the negative regulation of receptor tyrosine kinase-coupled signaling processes. This protein can be phosphorylated by tyrosine kinases. The phospho-tyrosine residues of this PTP have been shown to recruit SH2 domain containing tyrosine phosphatases (PTP), and serve as substrates of PTPs. This protein was found to participate in signal transduction mediated by various growth factor receptors. CD47 has been demonstrated to be a ligand for this receptor protein. This gene and its product share very high similarity with several other members of the SIRP family. These related genes are located in close proximity to each other on chromosome 20p13. Multiple alternatively spliced transcript variants have been determined for this gene.

Immunogen Information

Gene ID

140885

Swiss Prot

P78324

Immunogen

Recombinant protein (or fragment). This information is considered to be commercially sensitive.

Synonyms

BIT; MFR; P84; SIRP; MYD-1; SHPS1; CD172A; PTPNS1

Contact

 | 400-999-6126

 | cn.market@abclonal.com.cn

 | www.abclonal.com.cn

Product Information

Source

Rabbit

Isotype

IgG

Purification

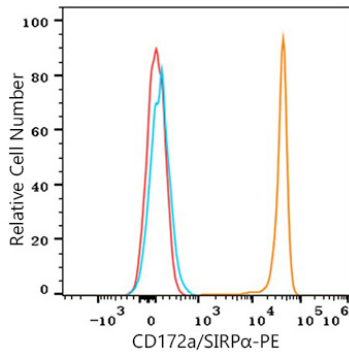
Affinity purification

Storage

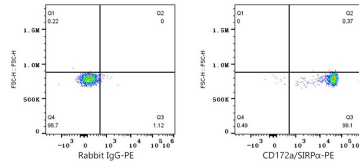
Store at 2-8°C. Avoid freeze.

Buffer: PBS with 0.09% Sodium azide, 0.2% BSA, pH7.3.

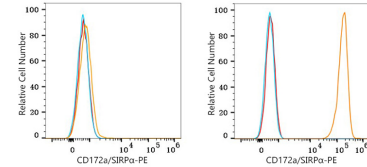
Validation Data



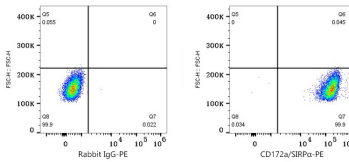
Flow cytometry: 1×10^6 Human PBMC were surface-stained with PE Rabbit anti-Human CD172a/SIRP α mAb (A26521,5 μ l/Test,orange line) or PE Rabbit IgG isotype control (A24172,5 μ l/Test,blue line). Non-fluorescently stained cells were used as blank control (red line).Cells in the monocyte gate were used for analysis.



Flow cytometry: 1×10^6 Human PBMC were surface-stained with PE Rabbit IgG isotype control (A24172,5 μ l/Test,left) or PE Rabbit anti-Human CD172a/SIRP α mAb (A26521,5 μ l/Test,right).Cells in the monocyte gate were used for analysis.



Flow cytometry: 1×10^6 HEL cells (negative control,left) and U-937 cells (right) were surface-stained with PE Rabbit anti-Human CD172a/SIRP α mAb (A26521,5 μ l/Test,orange line) or PE Rabbit IgG isotype control (A24172,5 μ l/Test,blue line). Non-fluorescently stained cells were used as blank control (red line).



Flow cytometry: 1×10^6 U-937 cells were surface-stained with PE Rabbit IgG isotype control (A24172,5 μ l/Test,left) or PE Rabbit anti-Human CD172a/SIRP α mAb (A26521,5 μ l/Test,right).