

PE Rabbit anti-Human/Monkey CD127/IL-7R α mAb

Catalog No.: A26503

Basic Information

Observed MW

Calculated MW

52kDa

Category

Primary antibody

Applications

FC

Cross-Reactivity

Human, Cynomolgus

CloneNo number

ARC66004

Conjugate

PE. Ex:565nm. Em:574nm.

Recommended Dilutions

FC 5 μ l per 10^6 cells in
100 μ l volume

Background

The protein encoded by this gene is a receptor for interleukin 7 (IL7). The function of this receptor requires the interleukin 2 receptor, gamma chain (IL2RG), which is a common gamma chain shared by the receptors of various cytokines, including interleukins 2, 4, 7, 9, and 15. This protein has been shown to play a critical role in V(D)J recombination during lymphocyte development. Defects in this gene may be associated with severe combined immunodeficiency (SCID). Alternatively spliced transcript variants have been found.

Immunogen Information

Gene ID

Hu 3575 Cyon 102143679

Swiss Prot

P16871

Immunogen

Recombinant protein (or fragment). This information is considered to be commercially sensitive.

Synonyms

ILRA; CD127; IL7RA; CDW127; IMD104; sIL-7R; Inc-IL7R; IL7Ralpha; IL-7Ralpha; IL-7R-alpha

Contact

 | 400-999-6126

 | cn.market@abclonal.com.cn

 | www.abclonal.com.cn

Product Information

Source

Rabbit

Isotype

IgG

Purification

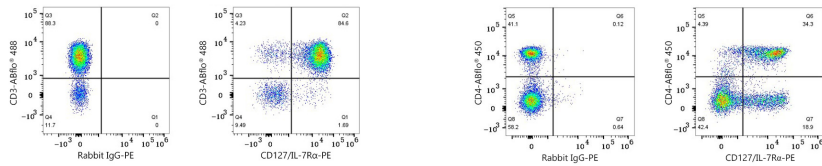
Affinity purification

Storage

Store at 2-8°C. Avoid freeze.

Buffer: PBS with 0.09% Sodium azide, 0.2% BSA, pH7.3.

Validation Data



Flow cytometry: 1×10^6 Human PBMC were surface-stained with ABflo® 488 Rabbit anti-Human/Monkey CD3 mAb (A26283, 5 μ l/Test) and PE Rabbit IgG isotype control (A24172, 5 μ l/Test, left) or PE Rabbit anti-Human/Monkey CD127/IL-7R α mAb (A26503, 5 μ l/Test, right). Cells in the lymphocyte gate were used for analysis.

Flow cytometry: 1×10^6 Cynomolgus PBMC were surface-stained with ABflo® 450 Rabbit anti-Human/Monkey CD4 mAb (A26523, 5 μ l/Test) and PE Rabbit IgG isotype control (A24172, 5 μ l/Test, left) or PE Rabbit anti-Human/Monkey CD127/IL-7R α mAb (A26503, 5 μ l/Test, right). Cells in the lymphocyte gate were used for analysis.