

Integrin alpha 1/CD49a Rabbit mAb

Catalog No.: A26489 **Recombinant**

Basic Information

Observed MW

200 kDa

Calculated MW

131 kDa

Category

Primary antibody

Applications

WB,IF/ICC,IF-P,ELISA

Cross-Reactivity

Mouse, Rat

CloneNo number

ARC68866

Background

Predicted to enable collagen binding activity involved in cell-matrix adhesion; protein phosphatase binding activity; and signaling receptor binding activity. Involved in negative regulation of epidermal growth factor receptor signaling pathway. Acts upstream of or within cell adhesion; cellular extravasation; and neutrophil chemotaxis. Located in basal part of cell and external side of plasma membrane. Is expressed in blood vessel endothelium; embryo mesenchyme; intestine smooth muscle; and lung. Orthologous to human ITGA1 (integrin subunit alpha 1).

Recommended Dilutions

WB	1:3000 - 1:15000
IF/ICC	1:200 - 1:800
IF-P	1:200 - 1:800
ELISA	Recommended starting concentration is 1 µg/mL. Please optimize the concentration based on your specific assay requirements.

Contact

	400-999-6126
	cn.market@abclonal.com.cn
	www.abclonal.com.cn

Immunogen Information

Gene ID

109700

Swiss Prot

Q3V3R4

Immunogen

Recombinant protein (or fragment). This information is considered to be commercially sensitive.

Synonyms

Vla1; CD49A; E130012M19Rik

Product Information

Source

Rabbit

Isotype

IgG

Purification

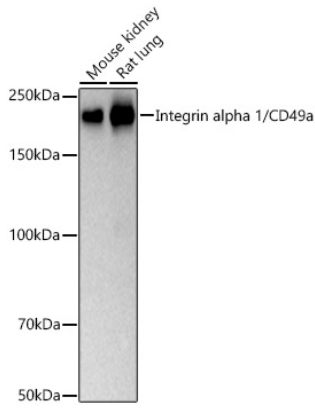
Affinity purification

Storage

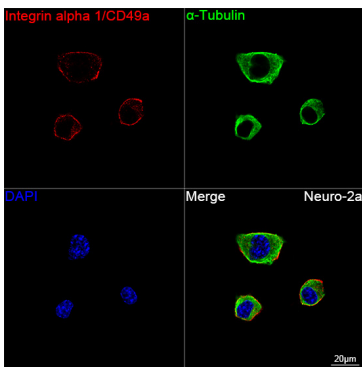
Store at -20°C. Avoid freeze / thaw cycles.

Buffer: PBS with 0.09% Sodium azide, 0.05% BSA, 50% glycerol, pH7.3.

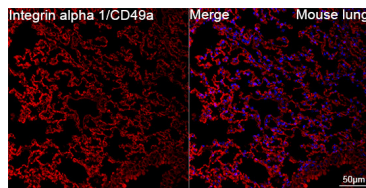
Validation Data



Western blot analysis of various lysates using Integrin alpha 1/CD49a Rabbit mAb (A26489) at 1:5000 dilution incubated overnight at 4°C.
Secondary antibody: HRP-conjugated Goat anti-Rabbit IgG (H+L) (AS014) at 1:10000 dilution.
Lysates/proteins: 25 µg per lane.
Blocking buffer: 3% nonfat dry milk in TBST.
Detection: ECL Basic Kit (RM00020).
Exposure time: 20 s.



Confocal imaging of Neuro-2a cells using Integrin alpha 1/CD49a Rabbit mAb (A26489, dilution 1:200) followed by a further incubation with Cy3 Goat Anti-Rabbit IgG (H+L) (AS007, dilution 1:500) (Red). The cells were counterstained with α-Tubulin Mouse mAb (AC012, dilution 1:400) followed by incubation with ABflo® 488-conjugated Goat Anti-Mouse IgG (H+L) Ab (AS076, dilution 1:500) (Green). DAPI was used for nuclear staining (Blue). Objective: 100x.



Confocal imaging of paraffin-embedded Mouse lung tissue using Integrin alpha 1/CD49a Rabbit mAb (A26489, dilution 1:200) followed by a further incubation with Cy3 Goat Anti-Rabbit IgG (H+L) (AS007, dilution 1:500) (Red). DAPI was used for nuclear staining (Blue). High pressure antigen retrieval performed with 0.01M Citrate Buffer (pH 6.0) prior to IF staining. Objective: 40x.