

ABflo® 450 Rabbit anti-Human/Monkey IgD mAb

Catalog No.: A26480

Basic Information

Observed MW

Refer to figures

Calculated MW

47kDa

Category

Primary antibody

Applications

FC

Cross-Reactivity

Human, Rhesus

CloneNo number

ARC60051

Conjugate

ABflo® 450. Ex:406nm. Em:445nm.

Recommended Dilutions

FC 5 µl per 10⁶ cells in
100 µl volume

Background

IgD is the major antigen receptor isotype on the surface of most peripheral B-cells, where it is coexpressed with IgM. The membrane-bound IgD (mIgD) induces the phosphorylation of CD79A and CD79B by the Src family of protein tyrosine kinases.

Immunogen Information

Gene ID

3495

Swiss Prot

P01880

Immunogen

Recombinant protein (or fragment). This information is considered to be commercially sensitive.

Synonyms

IGHD

Contact

☎ | 400-999-6126

✉ | cn.market@abclonal.com.cn

🌐 | www.abclonal.com.cn

Product Information

Source

Rabbit

Isotype

IgG

Purification

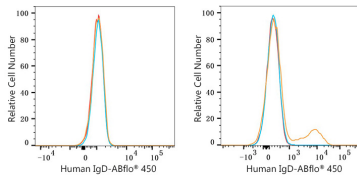
Affinity purification

Storage

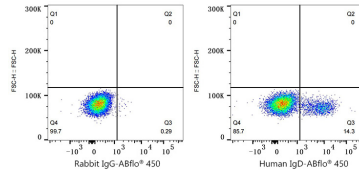
Store at 2-8°C. Avoid freeze.

Buffer: PBS with 0.09% Sodium azide, 0.2% BSA, pH7.3.

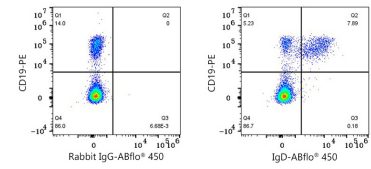
Validation Data



Flow cytometry: 1×10^6 Jurkat cells (negative control, left) and Human PBMC (right) were surface-stained with ABflo® 450 Rabbit anti-Human IgD mAb (A26480, 5 μ l/Test, orange line) or ABflo® 450 Rabbit IgG isotype control (5 μ l/Test, blue line). Non-fluorescently stained cells were used as blank control (red line).



Flow cytometry: 1×10^6 Human PBMC were surface-stained with ABflo® 450 Rabbit IgG isotype control (5 μ l/Test, left) or ABflo® 450 Rabbit anti-Human IgD mAb (A26480, 5 μ l/Test, right).



Flow cytometry: 1×10^6 Rhesus PBMC were surface-stained with APC Mouse anti-Human CD11b mAb (A27195, 5 μ l/Test), PE Rabbit anti-Human/Monkey CD19 mAb (A26609, 5 μ l/Test) and ABflo® 450 Rabbit IgG isotype control (A27451, 5 μ l/Test, left) or ABflo® 450 Rabbit anti-Human/Monkey IgD mAb (A26480, 5 μ l/Test, right). Cells in the CD11b-gate were used for analysis.