

PE Rabbit anti-Mouse CD324/E-Cadherin mAb

Catalog No.: A26477

Basic Information

Observed MW

Calculated MW

98kDa

Category

Primary antibody

Applications

FC

Cross-Reactivity

Mouse

CloneNo number

ARC68219

Conjugate

PE. Ex:565nm. Em:574nm.

Background

This gene encodes E-cadherin, a calcium-dependent cell adhesion molecule that functions in the establishment and maintenance of epithelial cell morphology during embryogenesis and adulthood. The encoded preproprotein undergoes proteolytic processing to generate a mature protein. Targeted mutations disrupting binding of calcium to the encoded protein in mice cause death in utero due to failed blastocyst and trophectoderm formation. This gene is located adjacent to a related cadherin gene on chromosome 8.

Recommended Dilutions

FC 5 µl per 10⁶ cells in
100 µl volume

Immunogen Information

Gene ID

12550

Swiss Prot

P09803

Immunogen

Recombinant protein (or fragment). This information is considered to be commercially sensitive.

Synonyms

Um; UVO; Ecad; ARC-1; E-cad; L-CAM

Contact

☎ | 400-999-6126

✉ | cn.market@abclonal.com.cn

🌐 | www.abclonal.com.cn

Product Information

Source

Rabbit

Isotype

IgG

Purification

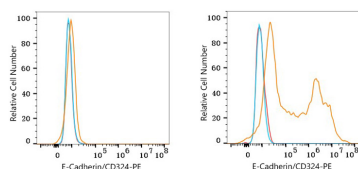
Affinity purification

Storage

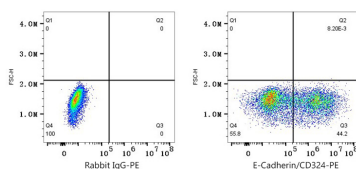
Store at 2-8°C. Avoid freeze.

Buffer: PBS with 0.09% Sodium azide, 0.2% BSA, pH7.3.

Validation Data



Flow cytometry: 1×10^6 CHO-S cells (negative control, left) and CHO-S (Transfection, right) cells were surface-stained with PE Rabbit anti-Mouse E-Cadherin/CD324 mAb (A26477,5 μ l/Test, orange line) or PE Rabbit IgG isotype control (A24172,5 μ l/Test, blue line). Non-fluorescently stained cells were used as blank control (red line).



Flow cytometry: 1×10^6 CHO-S (Transfection) cells were surface-stained with PE Rabbit IgG isotype control (A24172,5 μ l/Test, left) or PE Rabbit anti-Mouse E-Cadherin/CD324 mAb (A26477,5 μ l/Test, right).