

ICAM-1/CD54 Rabbit PolymAb®

Catalog No.: A26412PM

Basic Information

Observed MW

82-100 kDa

Calculated MW

58kDa/59kDa

Category

Primary antibody

Applications

WB,IP,IF/ICC,IF-P,IHC-P,ELISA

Cross-Reactivity

Human, Mouse, Rat

Background

This gene encodes a cell surface glycoprotein which is typically expressed on endothelial cells and cells of the immune system. It binds to integrins of type CD11a / CD18, or CD11b / CD18 and is also exploited by Rhinovirus as a receptor.

Recommended Dilutions

WB 1:6000 - 1:30000

IP 0.5 µg - 4 µg antibody for
400 µg - 600 µg extracts
of whole cells

IF/ICC 1:200 - 1:800

IF-P 1:200 - 1:800

IHC-P 1:5000 - 1:20000

ELISA Recommended starting concentration is 1 µg/mL. Please optimize the concentration based on your specific assay requirements. For high-ratio antibody dilutions ($\geq 1:10000$) a sequential dilution method is strongly recommended to ensure measurement accuracy.

Immunogen Information

Gene ID

3383/15894

Swiss Prot

P05362/P13597

Immunogen

Recombinant protein (or fragment). This information is considered to be commercially sensitive.

Synonyms

MAL; CD54; Icam; Ly-4; Ly-47; Icam-1; MALA-2

Product Information

Source

Rabbit

Isotype

IgG

Purification

Affinity purification

Storage

Store at -20°C. Avoid freeze / thaw cycles.

Buffer: PBS containing 50% glycerol and 0.05% BSA, preserved with proclin300 or sodium azide (as specified on the Certificate of Analysis), pH 7.3.

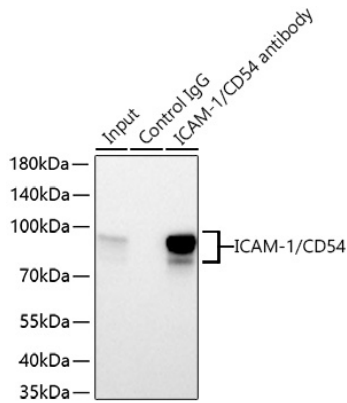
Contact

 | 400-999-6126

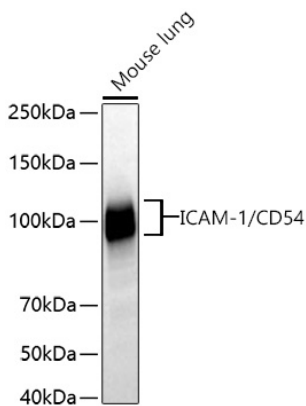
 | cn.market@abclonal.com.cn

 | www.abclonal.com.cn

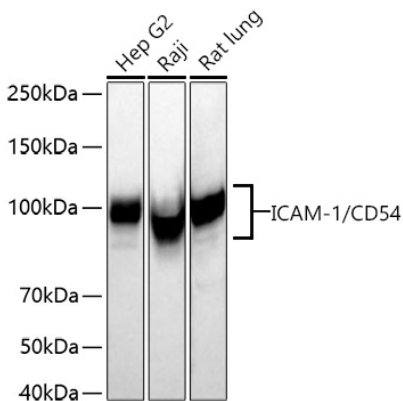
Validation Data



Immunoprecipitation of ICAM-1/CD54 from 600 µg extracts of Raji cells was performed using 2 µg of ICAM-1/CD54 Rabbit PolymAb® (A26412PM). Rabbit Control IgG (AC005) was used to precipitate the Control IgG sample. IP samples were eluted with 1x Laemmli Buffer. The Input lane represents 10% of the total input. Western blot analysis of immunoprecipitates was conducted using ICAM-1/CD54 Rabbit PolymAb® (A26412PM) at a dilution of 1:20000.

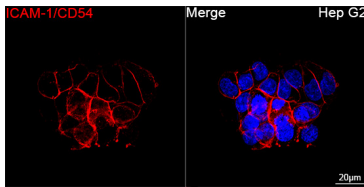


Western blot analysis of lysates from Mouse lung using ICAM-1/CD54 Rabbit PolymAb® (A26412PM) at 1:16000 dilution incubated at room temperature for 1.5 hours.
Secondary antibody: HRP-conjugated Goat anti-Rabbit IgG (H+L) (AS014) at 1:10000 dilution.
Lysates/proteins: 25 µg per lane.
Blocking buffer: 3% nonfat dry milk in TBST.
Detection: ECL Basic Kit (RM00020).
Exposure time: 10 s.

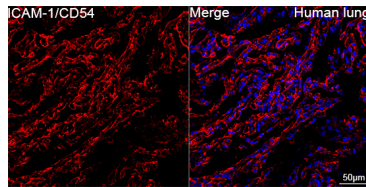


Western blot analysis of various lysates using ICAM-1/CD54 Rabbit PolymAb® (A26412PM) at 1:16000 dilution incubated at room temperature for 1.5 hours.
Secondary antibody: HRP-conjugated Goat anti-Rabbit IgG (H+L) (AS014) at 1:10000 dilution.
Lysates/proteins: 25 µg per lane.
Blocking buffer: 3% nonfat dry milk in TBST.
Detection: ECL Basic Kit (RM00020).
Exposure time: 45 s.

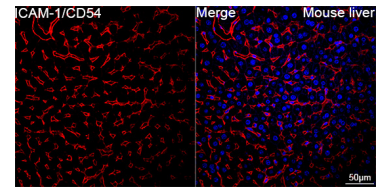
Validation Data



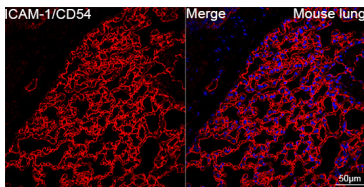
Confocal imaging of Hep G2 cells using ICAM-1/CD54 Rabbit PolymAb® (A26412PM, dilution 1:200) followed by a further incubation with Cy3-conjugated Goat anti-Rabbit IgG (H+L) (AS007, dilution 1:500) (Red). DAPI was used for nuclear staining (Blue). Objective: 100x.



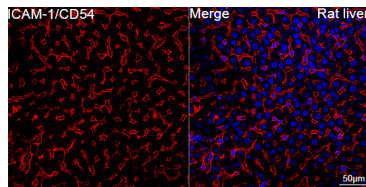
Confocal imaging of paraffin-embedded Human lung tissue using ICAM-1/CD54 Rabbit PolymAb® (A26412PM, dilution 1:200) followed by a further incubation with Cy3-conjugated Goat anti-Rabbit IgG (H+L) (AS007, dilution 1:500) (Red). DAPI was used for nuclear staining (Blue). High pressure antigen retrieval performed with 0.01M Citrate Buffer (pH 6.0) prior to IF staining. Objective: 40x.



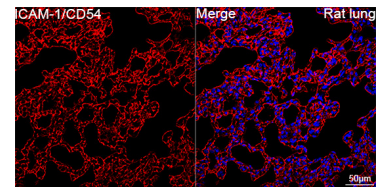
Confocal imaging of paraffin-embedded Mouse liver tissue using ICAM-1/CD54 Rabbit PolymAb® (A26412PM, dilution 1:200) followed by a further incubation with Cy3-conjugated Goat anti-Rabbit IgG (H+L) (AS007, dilution 1:500) (Red). DAPI was used for nuclear staining (Blue). High pressure antigen retrieval performed with 0.01M Citrate Buffer (pH 6.0) prior to IF staining. Objective: 40x.



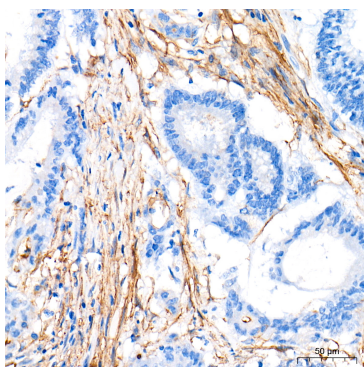
Confocal imaging of paraffin-embedded Mouse lung tissue using ICAM-1/CD54 Rabbit PolymAb® (A26412PM, dilution 1:200) followed by a further incubation with Cy3-conjugated Goat anti-Rabbit IgG (H+L) (AS007, dilution 1:500) (Red). DAPI was used for nuclear staining (Blue). High pressure antigen retrieval performed with 0.01M Citrate Buffer (pH 6.0) prior to IF staining. Objective: 40x.



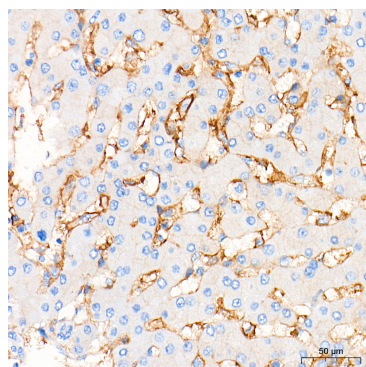
Confocal imaging of paraffin-embedded Rat liver tissue using ICAM-1/CD54 Rabbit PolymAb® (A26412PM, dilution 1:200) followed by a further incubation with Cy3-conjugated Goat anti-Rabbit IgG (H+L) (AS007, dilution 1:500) (Red). DAPI was used for nuclear staining (Blue). High pressure antigen retrieval performed with 0.01M Citrate Buffer (pH 6.0) prior to IF staining. Objective: 40x.



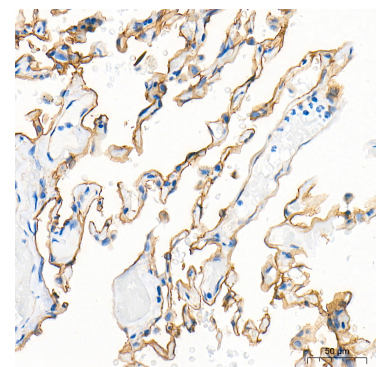
Confocal imaging of paraffin-embedded Rat lung tissue using ICAM-1/CD54 Rabbit PolymAb® (A26412PM, dilution 1:200) followed by a further incubation with Cy3-conjugated Goat anti-Rabbit IgG (H+L) (AS007, dilution 1:500) (Red). DAPI was used for nuclear staining (Blue). High pressure antigen retrieval performed with 0.01M Citrate Buffer (pH 6.0) prior to IF staining. Objective: 40x.



Immunohistochemistry analysis of paraffin-embedded Human colon carcinoma tissue using ICAM-1/CD54 Rabbit PolymAb® (A26412PM) at a dilution of 1:10000 (40x)



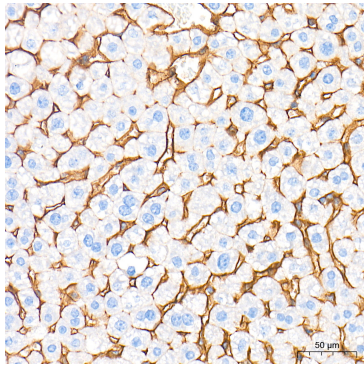
Immunohistochemistry analysis of paraffin-embedded Human liver tissue using ICAM-1/CD54 Rabbit PolymAb® (A26412PM) at a dilution of 1:10000 (40x lens). High



Immunohistochemistry analysis of paraffin-embedded Human lung tissue using ICAM-1/CD54 Rabbit PolymAb® (A26412PM) at a dilution of 1:10000 (40x lens). High

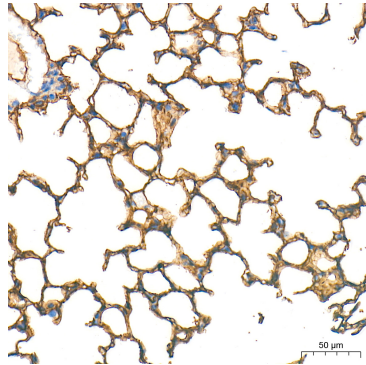
Validation Data

lens). High pressure antigen retrieval performed with 0.01M Tris-EDTA Buffer (pH 9.0) prior to IHC staining.



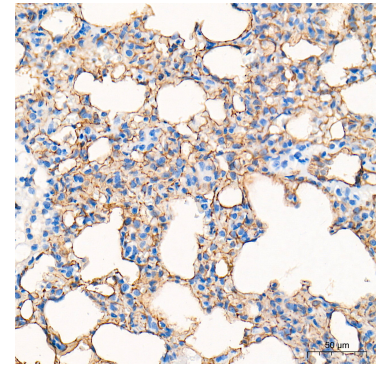
Immunohistochemistry analysis of paraffin-embedded Mouse liver tissue using ICAM-1/CD54 Rabbit PolymAb® (A26412PM) at a dilution of 1:10000 (40x lens). High pressure antigen retrieval performed with 0.01M Tris-EDTA Buffer (pH 9.0) prior to IHC staining.

pressure antigen retrieval performed with 0.01M Tris-EDTA Buffer (pH 9.0) prior to IHC staining.



Immunohistochemistry analysis of paraffin-embedded Mouse lung tissue using ICAM-1/CD54 Rabbit PolymAb® (A26412PM) at a dilution of 1:10000 (40x lens). High pressure antigen retrieval performed with 0.01M Tris-EDTA Buffer (pH 9.0) prior to IHC staining.

pressure antigen retrieval performed with 0.01M Tris-EDTA Buffer (pH 9.0) prior to IHC staining.



Immunohistochemistry analysis of paraffin-embedded Rat lung tissue using ICAM-1/CD54 Rabbit PolymAb® (A26412PM) at a dilution of 1:10000 (40x lens). High pressure antigen retrieval performed with 0.01M Tris-EDTA Buffer (pH 9.0) prior to IHC staining.