

IL-33R/ST2 Rabbit mAb

Catalog No.: A26402 Recombinant

Basic Information

Observed MW

55-60kDa

Calculated MW

65kDa

Category

Primary antibody

Applications

WB,IF/ICC,FC,ELISA

Cross-Reactivity

Mouse

CloneNo number

ARC67060

Background

Enables interleukin-33 binding activity and interleukin-33 receptor activity. Involved in several processes, including negative regulation of T-helper 1 type immune response; positive regulation of macrophage activation; and regulation of cytokine production. Acts upstream of or within negative regulation of I-kappaB kinase/NF-kappaB signaling. Located in external side of plasma membrane and extracellular matrix. Is expressed in several structures, including immune system; musculoskeletal system; salivary gland; skin; and visual system. Human ortholog(s) of this gene implicated in asthma and coronary artery disease. Orthologous to human IL1RL1 (interleukin 1 receptor like 1).

Recommended Dilutions

WB 1:1000 - 1:2000

IF/ICC 1:50 - 1:200

FC 1:500 - 1:1000

ELISA Recommended starting concentration is 1 µg/mL. Please optimize the concentration based on your specific assay requirements.

Immunogen Information

Gene ID

17082

Swiss Prot

P14719

Immunogen

Recombinant protein (or fragment). This information is considered to be commercially sensitive.

Synonyms

T1; St2; DER4; Ly84; ST2L; Fit-1; T1/ST2; St2-rs1

Contact

 | 400-999-6126

 | cn.market@abclonal.com.cn
 | www.abclonal.com.cn

Product Information

Source

Rabbit

Isotype

IgG

Purification

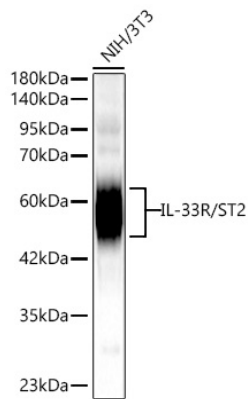
Affinity purification

Storage

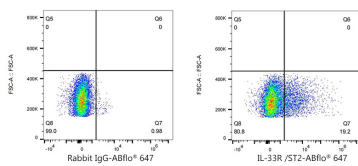
Store at -20°C. Avoid freeze / thaw cycles.

Buffer: PBS containing 50% glycerol and 0.05% BSA, preserved with proclin300 or sodium azide (as specified on the Certificate of Analysis), pH 7.3.

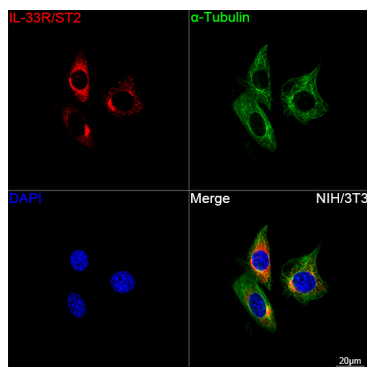
Validation Data



Western blot analysis of lysates from NIH/3T3 cells using IL-33R/ST2 Rabbit mAb (A26402) at 1:1000 dilution incubated overnight at 4°C.
Secondary antibody: HRP-conjugated Goat anti-Rabbit IgG (H+L) (AS014) at 1:10000 dilution.
Lysates/proteins: 25 µg per lane.
Blocking buffer: 3% nonfat dry milk in TBST.
Detection: ECL Basic Kit (RM00020).
Exposure time: 45s.



Flow cytometry: 1×10^6 CHO (Transfection) cells were surface-stained with Rabbit IgG isotype control (AC042, 2 µg/mL, left) or IL-33R/ST2 Rabbit mAb (A26402, 2 µg/mL, right), followed by Alexa Fluor® 647 conjugated goat anti-rabbit pAb staining.



Confocal imaging of NIH/3T3 cells using IL-33R/ST2 Rabbit mAb (A26402, dilution 1:200) followed by a further incubation with Cy3 Goat Anti-Rabbit IgG (H+L) (AS007, dilution 1:500) (Red). The cells were counterstained with α-Tubulin Mouse mAb (AC012, dilution 1:400) followed by incubation with ABflo® 488-conjugated Goat Anti-Mouse IgG (H+L) Ab (AS076, dilution 1:500) (Green). DAPI was used for nuclear staining (Blue). Objective: 100x.