

PE Rabbit anti-Mouse IgM mAb

Catalog No.: A26392

Basic Information

Observed MW

Calculated MW

50kDa/53kDa

Category

Primary antibody

Applications

FC

Cross-Reactivity

Mouse

CloneNo number

ARC58894

Conjugate

PE. Ex:565nm. Em:574nm.

Recommended Dilutions

FC 5 μ l per 10^6 cells in
100 μ l volume

Background

Enables several functions, including antigen binding activity; identical protein binding activity; and immunoglobulin receptor binding activity. Acts upstream of or within several processes, including early endosome to late endosome transport; immunoglobulin mediated immune response; and positive regulation of B cell proliferation. Located in external side of plasma membrane; extracellular space; and perinuclear region of cytoplasm. Part of B cell receptor complex and immunoglobulin complex, circulating. Is expressed in several structures, including brain; hemolymphoid system; and liver. Used to study non-Hodgkin lymphoma and type 1 diabetes mellitus. Human ortholog(s) of this gene implicated in agammaglobulinemia. Orthologous to human IGHM (immunoglobulin heavy constant mu).

Immunogen Information

Gene ID

Swiss Prot

P01872

Immunogen

Recombinant protein (or fragment). This information is considered to be commercially sensitive.

Synonyms

Igm; muH; Igh6; Igh-6; Igh-M

Contact

☎ | 400-999-6126

✉ | cn.market@abclonal.com.cn

🌐 | www.abclonal.com.cn

Product Information

Source

Rabbit

Isotype

IgG

Purification

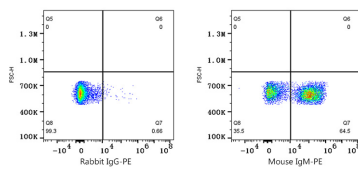
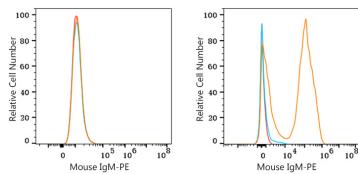
Affinity purification

Storage

Store at 2-8°C. Avoid freeze.

Buffer: PBS with 0.09% Sodium azide, 0.2% BSA, pH7.3.

Validation Data



Flow cytometry: 1X10⁶ NIH/3T3 cells (negative control, left) and C57BL/6 mouse splenocytes (right) were surface-stained with PE Rabbit anti-Mouse IgM mAb (A26392, 5 μ l/Test, orange line) or PE Rabbit IgG isotype control (A24172, 5 μ l/Test, blue line). Non-fluorescently stained cells were used as blank control (red line).

Flow cytometry: 1X10⁶ C57BL/6 mouse splenocytes were surface-stained with PE Rabbit IgG isotype control (A24172, 5 μ l/Test, left) or PE Rabbit anti-Mouse IgM mAb (A26392, 5 μ l/Test, right).