

PE Rabbit anti-Mouse IL-33R/ST2 mAb

Catalog No.: A26381

Basic Information

Observed MW

Refer to figures

Calculated MW

38kDa/65kDa

Category

Primary antibody

Applications

FC

Cross-Reactivity

Mouse

CloneNo number

ARC67060

Conjugate

PE. Ex:565nm. Em:574nm.

Recommended Dilutions

FC 5 μ l per 10^6 cells in
100 μ l volume

Background

Enables interleukin-33 binding activity and interleukin-33 receptor activity. Involved in several processes, including negative regulation of T-helper 1 type immune response; positive regulation of macrophage activation; and regulation of cytokine production. Acts upstream of or within negative regulation of I-kappaB kinase/NF-kappaB signaling. Located in external side of plasma membrane and extracellular matrix. Is expressed in several structures, including immune system; musculoskeletal system; salivary gland; skin; and visual system. Human ortholog(s) of this gene implicated in asthma and coronary artery disease. Orthologous to human IL1RL1 (interleukin 1 receptor like 1).

Immunogen Information

Gene ID

17082

Swiss Prot

P14719

Immunogen

Recombinant protein (or fragment). This information is considered to be commercially sensitive.

Synonyms

T1; St2; DER4; Ly84; ST2L; Fit-1; T1/ST2; St2-rs1

Contact

 | 400-999-6126

 | cn.market@abclonal.com.cn

 | www.abclonal.com.cn

Product Information

Source

Rabbit

Isotype

IgG

Purification

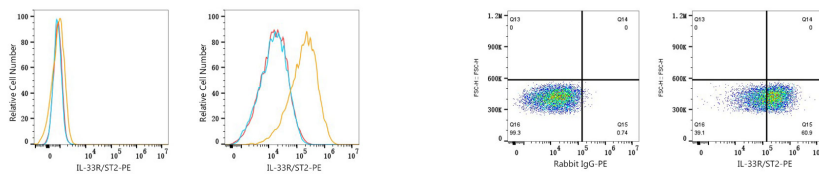
Affinity purification

Storage

Store at 2-8°C. Avoid freeze.

Buffer: PBS with 0.09% Sodium azide, 0.2% BSA, pH7.3.

Validation Data



Flow cytometry: 1×10^6 C2C12 cells (negative control, left) and P815 cells (right) were surface-stained with PE Rabbit anti-Mouse IL-33R/ST2 mAb (A26381, 5 μ l/Test, orange line) or PE Rabbit IgG isotype control (A24172, 5 μ l/Test, blue line). Non-fluorescently stained cells were used as blank control (red line).

Flow cytometry: 1×10^6 P815 cells were surface-stained with PE Rabbit IgG isotype control (A24172, 5 μ l/Test, left) or PE Rabbit anti-Mouse IL-33R/ST2 mAb (A26381, 5 μ l/Test, right).