

# APC Rabbit anti-Mouse CD272/BTLA mAb

Catalog No.: A26261

## Basic Information

### Observed MW

### Calculated MW

22kDa/34kDa

### Category

Primary antibody

### Applications

FC

### Cross-Reactivity

Mouse

### CloneNo number

ARC63351

### Conjugate

APC. Ex:650nm. Em:660nm.

## Background

Enables signaling receptor activity. Acts upstream of or within immune response-regulating cell surface receptor signaling pathway; negative regulation of B cell proliferation; and negative regulation of alpha-beta T cell proliferation. Located in external side of plasma membrane. Is integral component of plasma membrane. Orthologous to human BTLA (B and T lymphocyte associated).

## Recommended Dilutions

FC 5  $\mu$ l per  $10^6$  cells in  
100  $\mu$ l volume

## Immunogen Information

### Gene ID

208154

### Swiss Prot

Q7TSA3

### Immunogen

Recombinant protein (or fragment). This information is considered to be commercially sensitive.

### Synonyms

A630002H24

## Contact

 | 400-999-6126

 | [cn.market@abclonal.com.cn](mailto:cn.market@abclonal.com.cn)

 | [www.abclonal.com.cn](http://www.abclonal.com.cn)

## Product Information

### Source

Rabbit

### Isotype

IgG

### Purification

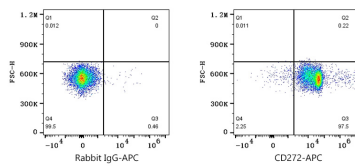
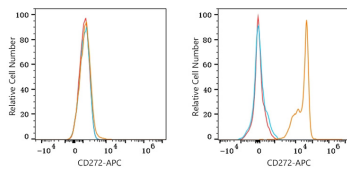
Affinity purification

### Storage

Store at 2-8°C. Avoid freeze.

Buffer: PBS with 0.09% Sodium azide, 0.2% BSA, pH7.3.

## Validation Data



Flow cytometry:  $1 \times 10^6$  C2C12 cells (negative control, left) and C57BL/6 mouse splenocytes (right) were surface-stained with APC Rabbit anti-Mouse CD272/BTLA mAb ( $A26261,5 \mu\text{l}/\text{Test}$ , orange line) or APC Rabbit IgG isotype control ( $A24173,5 \mu\text{l}/\text{Test}$ , blue line). Non-fluorescently stained cells were used as blank control (red line).

Flow cytometry:  $1 \times 10^6$  C57BL/6 mouse splenocytes were surface-stained with APC Rabbit IgG isotype control ( $A24173,5 \mu\text{l}/\text{Test}$ , left) or APC Rabbit anti-Mouse CD272/BTLA mAb ( $A26261,5 \mu\text{l}/\text{Test}$ , right).