

PerCP Rabbit anti-Human CD68 mAb

Catalog No.: A26255

Basic Information

Observed MW

Refer to figures

Calculated MW

37kDa

Category

Primary antibody

Applications

FC (intra)

Cross-Reactivity

Human

CloneNo number

ARC56633

Conjugate

PerCP. Ex:482nm. Em:678nm.

Recommended Dilutions

FC (intra) 5 μ l per 10^6 cells in
100 μ l volume

Background

This gene encodes a 110-kD transmembrane glycoprotein that is highly expressed by human monocytes and tissue macrophages. It is a member of the lysosomal/endosomal-associated membrane glycoprotein (LAMP) family. The protein primarily localizes to lysosomes and endosomes with a smaller fraction circulating to the cell surface. It is a type I integral membrane protein with a heavily glycosylated extracellular domain and binds to tissue- and organ-specific lectins or selectins. The protein is also a member of the scavenger receptor family. Scavenger receptors typically function to clear cellular debris, promote phagocytosis, and mediate the recruitment and activation of macrophages. Alternative splicing results in multiple transcripts encoding different isoforms.

Immunogen Information

Gene ID

968

Swiss Prot

P34810

Immunogen

Recombinant protein (or fragment). This information is considered to be commercially sensitive.

Synonyms

GP110; LAMP4; SCARD1

Contact

☎ | 400-999-6126

✉ | cn.market@abclonal.com.cn

🌐 | www.abclonal.com.cn

Product Information

Source

Rabbit

Isotype

IgG

Purification

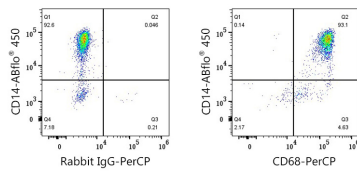
Affinity purification

Storage

Store at 2-8°C. Avoid freeze.

Buffer: PBS with 0.09% Sodium azide, 0.2% BSA, pH7.3.

Validation Data



Flow cytometry: 1X10⁶ Human PBMC were surface-stained with ABflo® 450 Rabbit anti-Human/Monkey CD14 mAb (A25196, 5 µl/Test) and then intracellularly-stained with PerCP Rabbit IgG isotype control (A24204, 5 µl/Test, left) or PerCP Rabbit anti-Human CD68 mAb (A26255, 5 µl/Test, right). Cells in the monocyte gate were used for analysis.