

PRL/Prolactin Rabbit mAb

Catalog No.: A26250 **Recombinant**

Basic Information

Observed MW

Refer to figures

Calculated MW

26kDa

Category

Primary antibody

Applications

IHC-P,ELISA

Cross-Reactivity

Human

CloneNo number

ARC68292

Background

This gene encodes the anterior pituitary hormone prolactin. This secreted hormone is a growth regulator for many tissues, including cells of the immune system. It may also play a role in cell survival by suppressing apoptosis, and it is essential for lactation. Alternative splicing results in multiple transcript variants that encode the same protein.

Recommended Dilutions

IHC-P 1:1000 - 1:4000

ELISA Recommended starting concentration is 1 µg/mL. Please optimize the concentration based on your specific assay requirements.

Immunogen Information

Gene ID

5617

Swiss Prot

P01236

Immunogen

Recombinant fusion protein containing a sequence corresponding to amino acids 29-227 of human PRL/Prolactin (NP_000939.1).

Synonyms

GHA1

Contact

☎ | 400-999-6126

✉ | cn.market@abclonal.com.cn

🌐 | www.abclonal.com.cn

Product Information

Source

Rabbit

Isotype

IgG

Purification

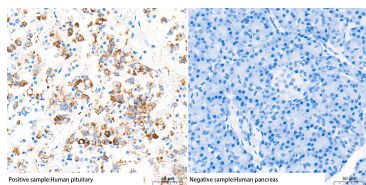
Affinity purification

Storage

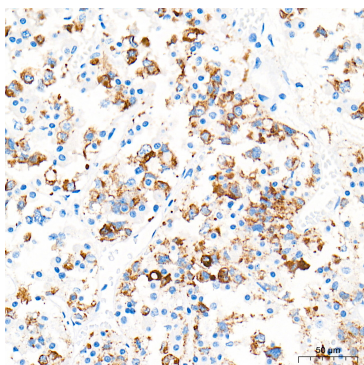
Store at -20°C. Avoid freeze / thaw cycles.

Buffer: PBS with 0.09% Sodium azide,0.05% BSA,50% glycerol,pH7.3.

Validation Data



Immunohistochemistry analysis of paraffin-embedded Human pituitary gland(positive sample) and pancreas(negative sample) tissue using PRL/Prolactin Rabbit mAb (A26250) at a dilution of 1:1000 (40x lens). High pressure antigen retrieval performed with 0.01M Tris-EDTA Buffer (pH 9.0) prior to IHC staining.



Immunohistochemistry analysis of paraffin-embedded Human pituitary gland tissue using PRL/Prolactin Rabbit mAb (A26250) at a dilution of 1:1000 (40x lens). High pressure antigen retrieval performed with 0.01M Tris-EDTA Buffer (pH 9.0) prior to IHC staining.