

[KO Validated] Cleaved Gasdermin E (N terminal) Rabbit mAb

Catalog No.: A26197 **KO** **Validated** **Recombinant** **1 Publications**

Basic Information

Observed MW

35kDa

Calculated MW

11 kDa/35 kDa/55 kDa

Category

Primary antibody

Applications

WB,IHC-P,ELISA

Cross-Reactivity

Human

CloneNo number

ARC70388

Background

Hearing impairment is a heterogeneous condition with over 40 loci described. The protein encoded by this gene is expressed in fetal cochlea, however, its function is not known. Nonsyndromic hearing impairment is associated with a mutation in this gene. Three transcript variants encoding two different isoforms have been found for this gene.

Recommended Dilutions

WB 1:500 - 1:2000

IHC-P 1:200 - 1:800

ELISA Recommended starting concentration is 1 µg/mL. Please optimize the concentration based on your specific assay requirements.

Immunogen Information

Gene ID

1687

Swiss Prot

O60443

Immunogen

Synthetic peptide. This information is considered to be commercially sensitive.

Synonyms

DFNA5; ICERE-1

Contact

☎ | 400-999-6126

✉ | cn.market@abclonal.com.cn

🌐 | www.abclonal.com.cn

Product Information

Source

Rabbit

Isotype

IgG

Purification

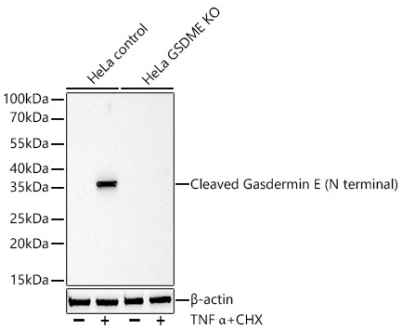
Affinity purification

Storage

Store at -20°C. Avoid freeze / thaw cycles.

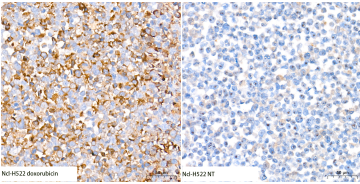
Buffer: PBS with 0.09% Sodium azide,0.05% BSA,50% glycerol,pH7.3.

Validation Data

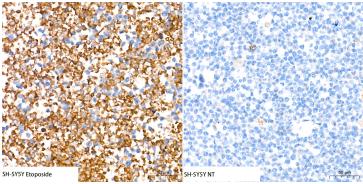


Western blot analysis of lysates from wild type (WT) and Gasdermin E (N terminal) knockout (KO) HeLa cells using [KO Validated] Cleaved Gasdermin E (N terminal) Rabbit mAb (A26197) at 1:2000 dilution incubated at room temperature for 1.5 hours. Wild type (WT) and GSDME knockout (KO) HeLa cells were treated with TNF- α (50ng/mL) and CHX (10 μ g/mL) at 37°C for 6 hours. Secondary antibody: HRP-conjugated Goat anti-Rabbit IgG (H+L) (AS014) at 1:10000 dilution. Lysates/proteins: 30 μ g per lane. Blocking buffer: 3% nonfat dry milk in TBST. Detection: ECL Basic Kit (RM00020). Exposure time: 90s.

WB samples for antibody validation are kindly provided by Dr. Feng Shao, NIBS



Immunohistochemistry analysis of paraffin-embedded NCI-H522(Doxorubicin-treated) and NCI-H522(untreated) cell line using [KO Validated] Cleaved Gasdermin E (N terminal) Rabbit mAb (A26197) at a dilution of 1:200 (40x lens). High pressure antigen retrieval performed with 0.01M Tris-EDTA Buffer (pH 9.0) prior to IHC staining.



Immunohistochemistry analysis of paraffin-embedded SH-SY5Y(Etoposide-treated) and SH-SY5Y(untreated) cell line using [KO Validated] Cleaved Gasdermin E (N terminal) Rabbit mAb (A26197) at a dilution of 1:200 (40x lens). High pressure antigen retrieval performed with 0.01M Tris-EDTA Buffer (pH 9.0) prior to IHC staining.