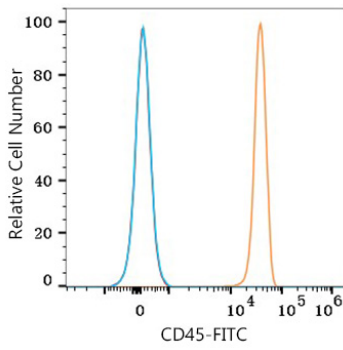
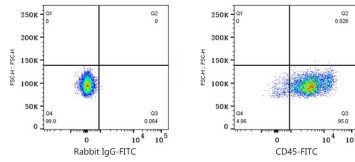




## Validation Data



Flow cytometry:  $1 \times 10^6$  Human PBMC were surface-stained with FITC Rabbit anti-Human/Monkey CD45 mAb (A26186, 5  $\mu$ l/Test, orange line) or FITC Rabbit IgG isotype control (A25616, 5  $\mu$ l/Test, blue line). Non-fluorescently stained cells were used as blank control (red line). Cells in the lymphocyte gate were used for analysis.



Flow cytometry:  $1 \times 10^6$  Cynomolgus peripheral blood mononuclear cells were surface-stained with FITC Rabbit IgG isotype control (A25616, 5  $\mu$ l/Test, left) or FITC Rabbit anti-Human/Monkey CD45 mAb (A26186, 5  $\mu$ l/Test, right). Cells in the lymphocyte gate were used for analysis.