

FRA1 Rabbit mAb

Catalog No.: A26169 **Recombinant**

Basic Information

Observed MW

40kDa

Calculated MW

29kDa

Category

Primary antibody

Applications

WB, ELISA

Cross-Reactivity

Human

CloneNo number

ARC64664

Background

The Fos gene family consists of 4 members: FOS, FOSB, FOSL1, and FOSL2. These genes encode leucine zipper proteins that can dimerize with proteins of the JUN family, thereby forming the transcription factor complex AP-1. As such, the FOS proteins have been implicated as regulators of cell proliferation, differentiation, and transformation. Several transcript variants encoding different isoforms have been found for this gene.

Recommended Dilutions

WB 1:2000 - 1:10000

ELISA Recommended starting concentration is 1 µg/mL. Please optimize the concentration based on your specific assay requirements.

Immunogen Information

Gene ID

8061

Swiss Prot

P15407

Immunogen

Synthetic peptide. This information is considered to be commercially sensitive.

Synonyms

FRA; FRA1; fra-1

Contact

☎ | 400-999-6126

✉ | cn.market@abclonal.com.cn

🌐 | www.abclonal.com.cn

Product Information

Source

Rabbit

Isotype

IgG

Purification

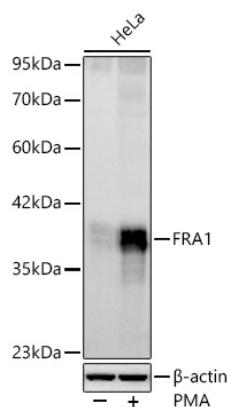
Affinity purification

Storage

Store at -20°C. Avoid freeze / thaw cycles.

Buffer: PBS with 0.09% Sodium azide, 0.05% BSA, 50% glycerol, pH7.3

Validation Data



Western blot analysis of lysates from HeLa cells using FRA1 Rabbit mAb (A26169) at 1:10000 dilution incubated overnight at 4°C. HeLa cells were treated by PMA(100 ng/ml) at 37°C for 4 hours after serum-starvation overnight.
Secondary antibody: HRP-conjugated Goat anti-Rabbit IgG (H+L) (AS014) at 1:10000 dilution.
Lysates/proteins: 30 μ g per lane.
Blocking buffer: 3 % nonfat dry milk in TBST.
Detection: ECL Basic Kit (RM00020).
Exposure time: 30s.