

Integrin alpha 3/CD49c Rabbit mAb

Catalog No.: A26152 **Recombinant**

Basic Information

Observed MW

Refer to figures

Calculated MW

117kDa

Category

Primary antibody

Applications

IHC-P,FC,ELISA

Cross-Reactivity

Human

CloneNo number

ARC67523

Background

The gene encodes a member of the integrin alpha chain family of proteins. Integrins are heterodimeric integral membrane proteins composed of an alpha chain and a beta chain that function as cell surface adhesion molecules. The encoded preproprotein is proteolytically processed to generate light and heavy chains that comprise the alpha 3 subunit. This subunit joins with a beta 1 subunit to form an integrin that interacts with extracellular matrix proteins including members of the laminin family. Expression of this gene may be correlated with breast cancer metastasis.

Recommended Dilutions

IHC-P 1:50 - 1:200

FC 1:500 - 1:1000

ELISA Recommended starting concentration is 1 µg/mL. Please optimize the concentration based on your specific assay requirements.

Immunogen Information

Gene ID

3675

Swiss Prot

P26006

Immunogen

Recombinant protein (or fragment). This information is considered to be commercially sensitive.

Synonyms

JB7; VL3A; CD49C; FRP-2; GAPB3; ILNEB; MSK18; VCA-2; VLA3a; GAP-B3

Contact

☎ | 400-999-6126

✉ | cn.market@abclonal.com.cn

🌐 | www.abclonal.com.cn

Product Information

Source

Rabbit

Isotype

IgG

Purification

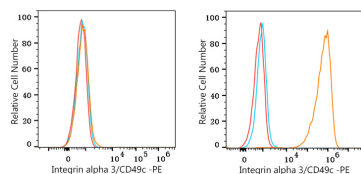
Affinity purification

Storage

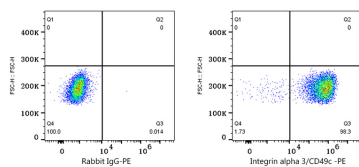
Store at -20°C. Avoid freeze / thaw cycles.

Buffer: PBS with 0.09% Sodium azide, 0.05% BSA, 50% glycerol, pH7.3

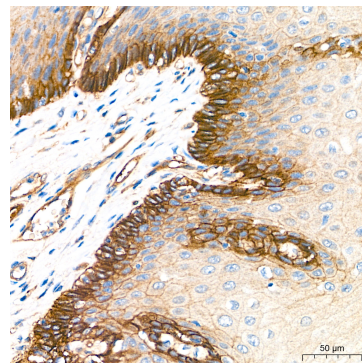
Validation Data



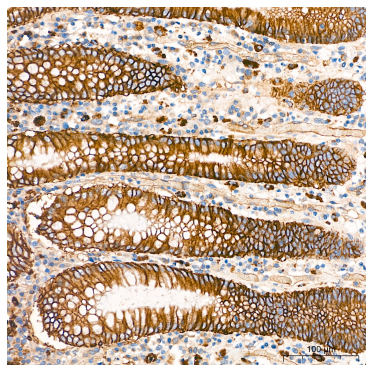
Flow cytometry: 1×10^6 K-562 cells (negative control, left) and A-431 cells (right) were surface-stained with Integrin alpha 3/CD49c Rabbit mAb (A26152, 2 $\mu\text{g/mL}$, orange line) or Rabbit IgG isotype control (AC042, 2 $\mu\text{g/mL}$, blue line), followed by PE Donkey anti-Rabbit pAb staining. Non-fluorescently stained cells were used as blank control (red line).



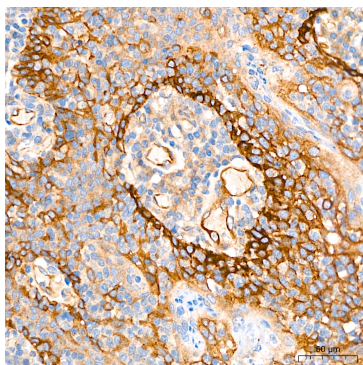
Flow cytometry: 1×10^6 A-431 cells were surface-stained with Rabbit IgG isotype control (AC042, 2 $\mu\text{g/mL}$, left) or Integrin alpha 3/CD49c Rabbit mAb (A26152, 2 $\mu\text{g/mL}$, right), followed by PE Donkey anti-Rabbit pAb staining.



Immunohistochemistry analysis of paraffin-embedded Human esophagus tissue using Integrin alpha 3/CD49c Rabbit mAb (A26152) at a dilution of 1:200 (40x lens). High pressure antigen retrieval performed with 0.01M Citrate Buffer (pH 6.0) prior to IHC staining.



Immunohistochemistry analysis of paraffin-embedded Human colon tissue using Integrin alpha 3/CD49c Rabbit mAb (A26152) at a dilution of 1:200 (40x lens). High pressure antigen retrieval performed with 0.01M Citrate Buffer (pH 6.0) prior to IHC staining.



Immunohistochemistry analysis of paraffin-embedded Human tonsil tissue using Integrin alpha 3/CD49c Rabbit mAb (A26152) at a dilution of 1:200 (40x lens). High pressure antigen retrieval performed with 0.01M Citrate Buffer (pH 6.0) prior to IHC staining.