

ABflo® 647 Rabbit anti-Human KLRG1 PolymAb®

Catalog No.: A26141PM

Basic Information

Observed MW

Calculated MW
22kDa

Category
Primary antibody

Applications
FC

Cross-Reactivity
Human

CloneNo number
ARC67847_ARC67854

Conjugate
ABflo® 647. Ex:648nm. Em:664nm.

Background

Natural killer (NK) cells are lymphocytes that can mediate lysis of certain tumor cells and virus-infected cells without previous activation. They can also regulate specific humoral and cell-mediated immunity. The protein encoded by this gene belongs to t

Recommended Dilutions

FC 5 µl per 10⁶ cells in
100 µl volume

Immunogen Information

Gene ID	Swiss Prot
10219	Q96E93

Immunogen

Recombinant protein (or fragment). This information is considered to be commercially sensitive.

Synonyms

2F1; MAFA; MAFA-L; CLEC15A; MAFA-2F1; MAFA-LIKE

Contact

 | 400-999-6126

 | cn.market@abclonal.com.cn

 | www.abclonal.com.cn

Product Information

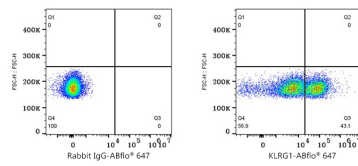
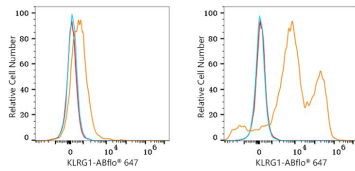
Source	Isotype	Purification
Rabbit	IgG	Affinity purification

Storage

Store at 2-8°C. Avoid freeze.

Buffer: PBS containing 0.2% BSA, preserved with proclin300 or sodium azide (as specified on the Certificate of Analysis), pH 7.3.

Validation Data



Flow cytometry: 1X10⁶ 293T cells (negative control, left) and 293T (Transfection, right) cells were surface-stained with ABflo® 647 Rabbit anti-Human KLRG1 PolymAb® (A26141PM, 5 µl/Test, orange line) or ABflo® 647 Rabbit IgG isotype control (A22070, 5 µl/Test, blue line). Non-fluorescently stained cells were used as blank control (red line).

Flow cytometry: 1X10⁶ 293T (Transfection) cells were surface-stained with ABflo® 647 Rabbit IgG isotype control (A22070, 5 µl/Test, left) or ABflo® 647 Rabbit anti-Human KLRG1 PolymAb® (A26141PM, 5 µl/Test, right).