

# ABflo® 488 Rabbit anti-Human KLRG1 PolymAb®

Catalog No.: A26140PM

## Basic Information

### Observed MW

**Calculated MW**  
22kDa

**Category**  
Primary antibody

**Applications**  
FC

**Cross-Reactivity**  
Human

**CloneNo number**  
ARC67847\_ARC67854

**Conjugate**  
ABflo® 488. Ex:491nm. Em:516nm.

## Recommended Dilutions

**FC** 5 µl per 10<sup>6</sup> cells in  
100 µl volume

## Background

Natural killer (NK) cells are lymphocytes that can mediate lysis of certain tumor cells and virus-infected cells without previous activation. They can also regulate specific humoral and cell-mediated immunity. The protein encoded by this gene belongs to t

## Immunogen Information

Gene ID	Swiss Prot
10219	Q96E93

### Immunogen

Recombinant protein (or fragment). This information is considered to be commercially sensitive.

### Synonyms

2F1; MAFA; MAFA-L; CLEC15A; MAFA-2F1; MAFA-LIKE

## Contact

☎ | 400-999-6126

✉ | [cn.market@abclonal.com.cn](mailto:cn.market@abclonal.com.cn)

🌐 | [www.abclonal.com.cn](http://www.abclonal.com.cn)

## Product Information

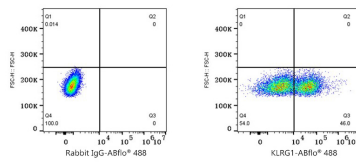
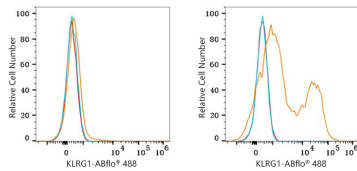
Source	Isotype	Purification
Rabbit	IgG	Affinity purification

### Storage

Store at 2-8°C. Avoid freeze.

Buffer: PBS containing 0.2% BSA, preserved with proclin300 or sodium azide (as specified on the Certificate of Analysis), pH 7.3.

## Validation Data



Flow cytometry:  $1 \times 10^6$  293T cells (negative control, left) and 293T (Transfection, right) cells were surface-stained with ABflo® 488 Rabbit anti-Human KLRG1 PolymAb® (A26140PM, 5  $\mu$ l/Test, orange line) or ABflo® 488 Rabbit IgG isotype control (A22069, 5  $\mu$ l/Test, blue line). Non-fluorescently stained cells were used as blank control (red line).

Flow cytometry:  $1 \times 10^6$  293T (Transfection) cells were surface-stained with ABflo® 488 Rabbit IgG isotype control (A22069, 5  $\mu$ l/Test, left) or ABflo® 488 Rabbit anti-Human KLRG1 PolymAb® (A26140PM, 5  $\mu$ l/Test, right).