

CD317/BST2 Rabbit mAb

Catalog No.: A26077 **Recombinant**

Basic Information

Observed MW

28-40kDa/50-70kDa

Calculated MW

19kDa

Category

Primary antibody

Applications

WB, ELISA

Cross-Reactivity

Mouse

CloneNo number

ARC66244

Background

Predicted to enable metalloendopeptidase inhibitor activity and protein homodimerization activity. Involved in several processes, including negative regulation of intracellular transport of viral material; negative regulation of viral genome replication; and response to interferon-gamma. Located in cell surface. Is expressed in retina. Human ortholog(s) of this gene implicated in acquired immunodeficiency syndrome and endometrial cancer. Orthologous to human BST2 (bone marrow stromal cell antigen 2).

Recommended Dilutions

WB 1:500 - 1:1000

ELISA Recommended starting concentration is 1 µg/mL. Please optimize the concentration based on your specific assay requirements.

Immunogen Information

Gene ID

69550

Swiss Prot

Q8R2Q8

Immunogen

Recombinant protein (or fragment). This information is considered to be commercially sensitive.

Synonyms

GREG; Bst-2; CD317; DAMP-1; 2310015I10Rik

Contact

☎ | 400-999-6126

✉ | cn.market@abclonal.com.cn

🌐 | www.abclonal.com.cn

Product Information

Source

Rabbit

Isotype

IgG

Purification

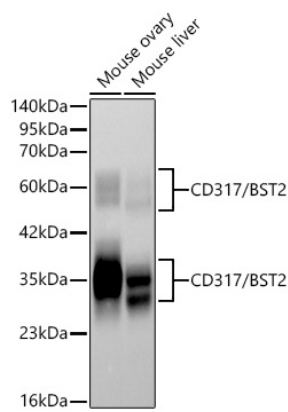
Affinity purification

Storage

Store at -20°C. Avoid freeze / thaw cycles.

Buffer: PBS containing 50% glycerol and 0.05% BSA, preserved with proclin300 or sodium azide (as specified on the Certificate of Analysis), pH 7.3.

Validation Data



Western blot analysis of various lysates using CD317/BST2 Rabbit mAb (A26077) at 1:3000 dilution incubated overnight at 4°C.
Secondary antibody: HRP-conjugated Goat anti-Rabbit IgG (H+L) (AS014) at 1:10000 dilution.
Lysates/proteins: 25 µg per lane.
Blocking buffer: 3% nonfat dry milk in TBST.
Detection: ECL Basic Kit (RM00020).
Exposure time: 90s.