

PE Rabbit anti-Mouse CD138/Syndecan-1 mAb

Catalog No.: A26050

Basic Information

Observed MW

Calculated MW

33kDa

Category

Primary antibody

Applications

FC

Cross-Reactivity

Mouse

CloneNo number

ARC66008

Conjugate

PE. Ex:565nm. Em:574nm.

Background

Predicted to enable identical protein binding activity and protein C-terminus binding activity. Involved in myoblast development. Acts upstream of or within canonical Wnt signaling pathway. Located in external side of plasma membrane. Is expressed in several structures, including alimentary system; egg cylinder; sensory organ; skin; and urinary system. Orthologous to human SDC1 (syndecan 1).

Recommended Dilutions

FC 5 μ l per 10^6 cells in
100 μ l volume

Immunogen Information

Gene ID

20969

Swiss Prot

P18828

Immunogen

Recombinant protein (or fragment). This information is considered to be commercially sensitive.

Synonyms

Sstn; Synd; CD138; Synd1; syn-1; CD138/Syndecan-1

Contact

☎ | 400-999-6126

✉ | cn.market@abclonal.com.cn

🌐 | www.abclonal.com.cn

Product Information

Source

Rabbit

Isotype

IgG

Purification

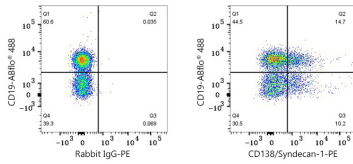
Affinity purification

Storage

Store at 2-8°C. Avoid freeze.

Buffer: PBS with 0.09% Sodium azide, 0.2% BSA, pH7.3.

Validation Data



Flow cytometry: 1×10^6 C57BL/6 mouse bone marrow cells were surface-stained with ABflo® 488 Rabbit anti-Mouse CD19 mAb (A25968, 5 μ l/Test) and PE Rabbit IgG isotype control (A24172, 5 μ l/Test, left) or PE Rabbit anti-Mouse CD138/Syndecan-1 mAb (A26050, 5 μ l/Test, right). Cells in the lymphocyte gate were used for analysis.