

Monkey IgD Rabbit mAb

Catalog No.: A26038 **Recombinant**

Basic Information

Observed MW

Calculated MW

Category

Primary antibody

Applications

IHC-P,FC,ELISA

Cross-Reactivity

Cynomolgus

CloneNo number

ARC60233

Background

Recommended Dilutions

IHC-P 1:200 - 1:800

FC 1:500 - 1:1000

ELISA Recommended starting concentration is 1 µg/mL. Please optimize the concentration based on your specific assay requirements.

Immunogen Information

Gene ID


Swiss Prot

Immunogen

Recombinant protein (or fragment). This information is considered to be commercially sensitive.

Synonyms

Contact

 | 400-999-6126

 | cn.market@abclonal.com.cn

 | www.abclonal.com.cn

Product Information

Source

Rabbit

Isotype

IgG

Purification

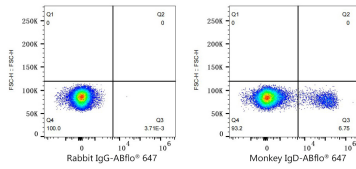
Affinity purification

Storage

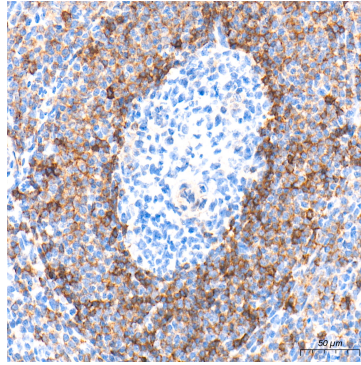
Store at -20°C. Avoid freeze / thaw cycles.

Buffer: PBS containing 50% glycerol and 0.05% BSA, preserved with proclin300 or sodium azide (as specified on the Certificate of Analysis), pH 7.3.

Validation Data



Flow cytometry: 1×10^6 Moneky PBMC were surface-stained with Rabbit IgG isotype control (AC042, 2 $\mu\text{g}/\text{mL}$, left) or Monkey IgD Rabbit mAb (A26038, 2 $\mu\text{g}/\text{mL}$, right), followed by Alexa Fluor® 647 conjugated goat anti-rabbit pAb staining.



Immunohistochemistry analysis of paraffin-embedded Cynomolgus monkey spleen tissue using Monkey IgD Rabbit mAb (A26038) at a dilution of 1:500 (40x lens). High pressure antigen retrieval performed with 0.01M Tris-EDTA Buffer (pH 9.0) prior to IHC staining.